

For Lease

Level Three 1521 Forest Road ORANGE

LEVEL 3 BLOOMFIELD MEDICAL CENTRE - LEASING OPPORTUNITIES

Orange is the largest urban area in Central West New South Wales, population circa 42,500.

The diversified regional economy of Orange is centred on mining, health services and government administration.

Location

Located in Orange's Bloomfield health precinct, Opposite Orange Health Service (including Orange Base Hospital) and adjoining The Remington Hotel, child care center and neighborhood shopping center.

Description

State of the art six level landmark medical facility in Orange's rapidly expanding health precinct.

Diverse tenancy mix in the building including Ramsey Health Care, general practitioners, specialists rooms, pathology, medical imaging, pharmacy, CSU School of Rural Medicine and cafe.

Leasing opportunities available on level 3 for suites ranging from 95 sqm to 456sqm.

Larger suites also available including whole floor 2,267sqm.

Use or modify the exiting high quality fitout.

Generous leasing incentives available.

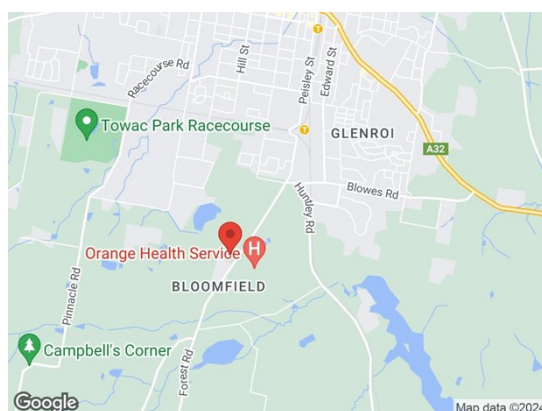
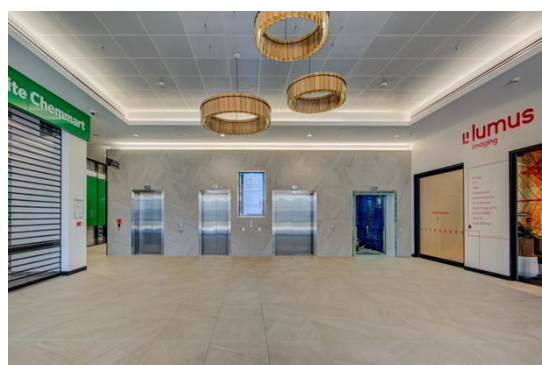
Suitable for medical consulting rooms, allied health professionals, mental health services and NDIS providers.

Accessed via 4 high speed lifts (2 stretcher lifts).

Extensive double glazed windows provide excellent natural light and beautiful views from all four sides of the building.

Pricing

Contact agent for pricing information



BENCHMARK
COMMERCIAL

194B Lords Place, Orange NSW 2800

Telephone: (02) 63 62 5988

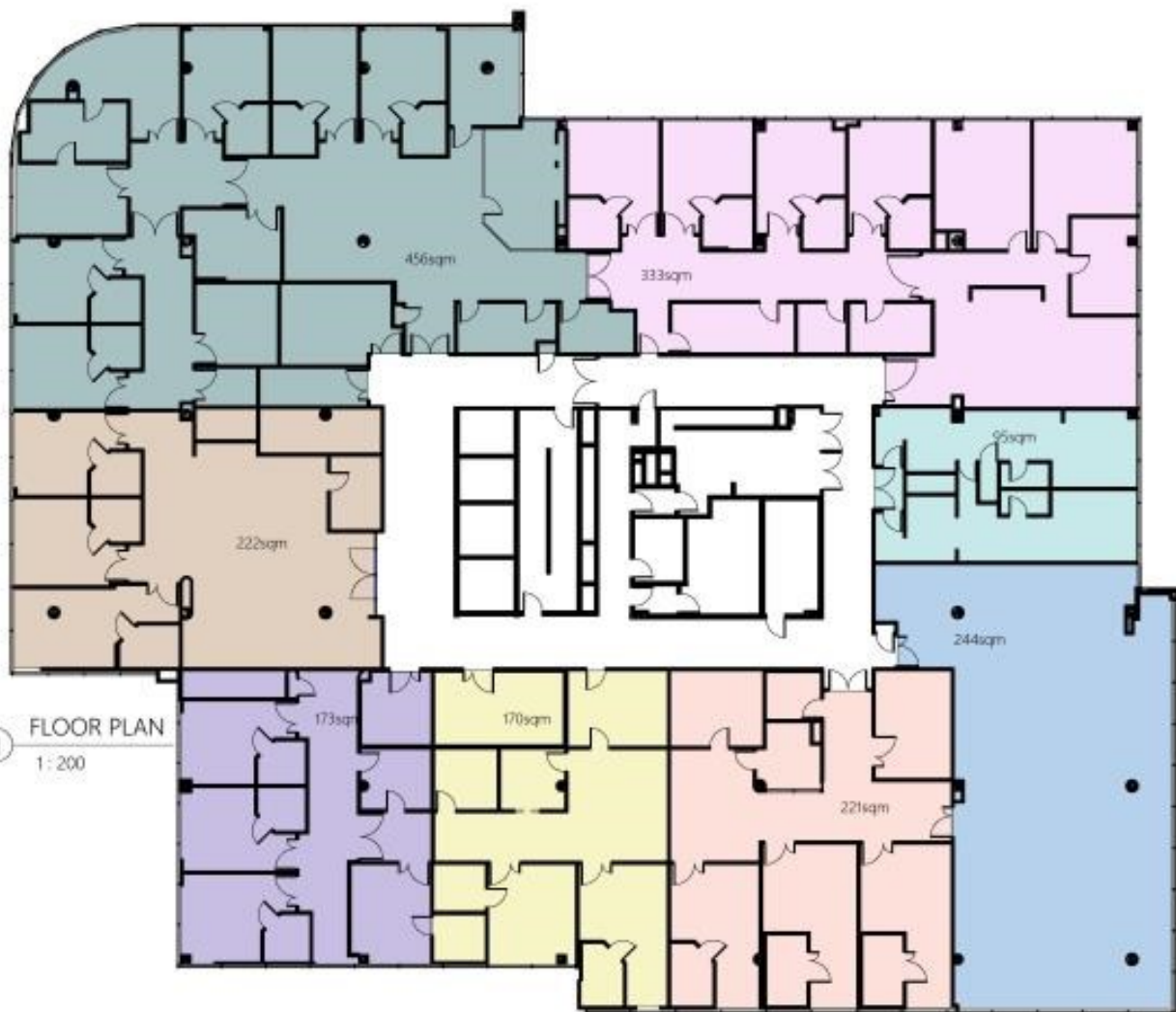
Email: sales@bmpa.com.au

Web: www.bmpa.com.au

For more information please contact

David Hall
0429 656 101

Nigel Staniforth
0401 279 795



① FLOOR PLAN
1:200

consilo
HEALTH PRACTICE INTERIORS

006 09 44 44
www.consilo.com.au

171 CAMBRIDGE PARADE
MAREE, QLD, 4175 A/LK

COPYRIGHT THIS DOCUMENT IS OWNED BY AND THE INFORMATION CONTAINED IN IT IS PROPRIETARY TO CONSILIO. REPRODUCTION OF THIS DOCUMENT BY ANY PERSON WITHOUT THE WRITTEN CONSENT OF CONSILIO IS STRICTLY PROHIBITED. ANY UNAUTHORIZED REPRODUCTION OF THIS DOCUMENT IS A BREACH OF THE COPYRIGHT ACT 1969 AND MAY BE SUBJECT TO PROSECUTION UNDER THE COPYRIGHT ACT 1969.

NO.	DATE	DESCRIPTION	BY
1	22.04.24	INITIAL DRAFT	IB
2	30.04.24	DESIGN REVIEW 01	IB
3	09.05.24	DESIGN REVIEW 02	IB
4	30.05.24	DESIGN REVIEW 03	IB

PROJECT TITLE
ORANGE PRIVATE
HOSPITAL - CENTURIA
HEALTH

DRAWING TITLE
CONCEPT PLAN

1521 FOREST RD, ORANGE,
NSW

PROJECT NO.	180	DRAWN	IB
DATE	10 JUNE 24	CHECKED	RT
DRAWING NO.	A300	DRAWING SCALE	REVISION
		1:200	03