

For Lease

222 Anson Street ORANGE

CBD OFFICE SUITES

Orange is the largest urban area in Central West New South Wales, population circa 42,500.

The diversified regional economy of Orange is centred on mining, health services and government administration.

Location

Located on the Eastern side of Anson Street in the heart of the CBD and fronting the Orange Central Shopping Centre car park.

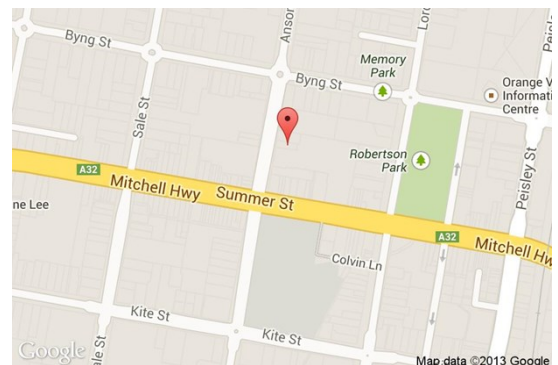
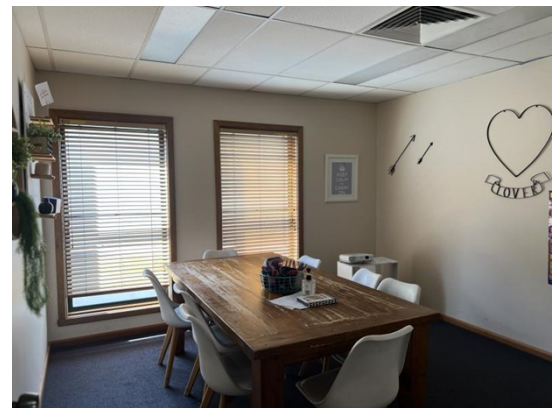
Description

Prime CBD Commercial Leasing Opportunity
3 well presented office tenancies with good natural light
Ducted reverse cycle air-conditioning
Carpets, paint & window furnishings in good condition
Available separately or in one line as a single tenancy
Reduced rental rate for the whole floor
Available from August 2025

Amenities: Shared
Ceiling: Grid
Lighting: Mixed Configuration
Air Conditioning: Yes
Data Cabling: Yes
Security System: Yes

Parking: Public car park adjoins

Zoning: E2 Commercial Centre



Tenancy	Area m ²	Rent (Ex GST)		Net/Gross
		\$pa	\$/m ²	
Level One Suite 1	111	\$27,750	\$250	Gross
Level One Suite 2	101	\$25,250	\$250	Gross
Level One Suite 3	129	\$32,250	\$250	Gross

For more information please contact

David Hall
0429 656 101

Nigel Staniforth
0401 279 795



BENCHMARK
COMMERCIAL

194B Lords Place, Orange NSW 2800

Telephone: (02) 63 62 5988
Email: sales@bmpa.com.au
Web: www.bmpa.com.au

