

# For Lease

245 Summer Street ORANGE

## PRIME CBD RETAIL SHOP OR OFFICE

Orange is the largest urban area in Central West New South Wales, population circa 42,500.

The diversified regional economy of Orange is centred on mining, health services and government administration.

## Location

Situated in the heart of the Orange CBD retail strip close to Post Office Commonwealth Bank and Orange Central Shopping Centre.

## Description

Excellent location in heart of the CBD retail precinct & close to national retailers

Modern glass shop front

Quality air-conditioned accommodation

On-site car parking

Suit professional services or retail businesses

Retail Frontage: 5 metres

Amenities: Unisex

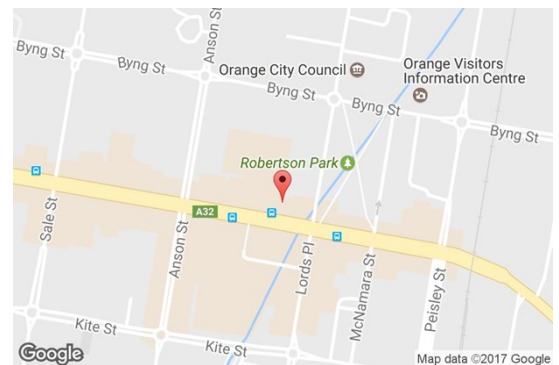
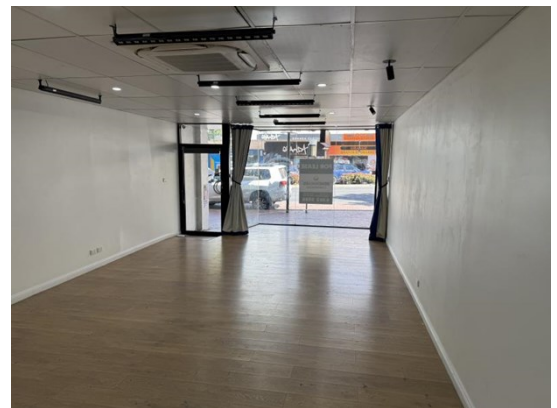
Ceiling: Grid

Lighting: Fluorescent

Air Conditioning: Yes

Parking: 1 on-site parking spaces

Zoning: E2 Commercial Centre



Area m <sup>2</sup>	Rent (Ex GST)		Net/Gross
	\$pa	\$/m <sup>2</sup>	
98	\$44,100	\$450	Gross

For more information please contact

**Nigel Staniforth**

0401 279 795

**David Hall**

0429 656 101

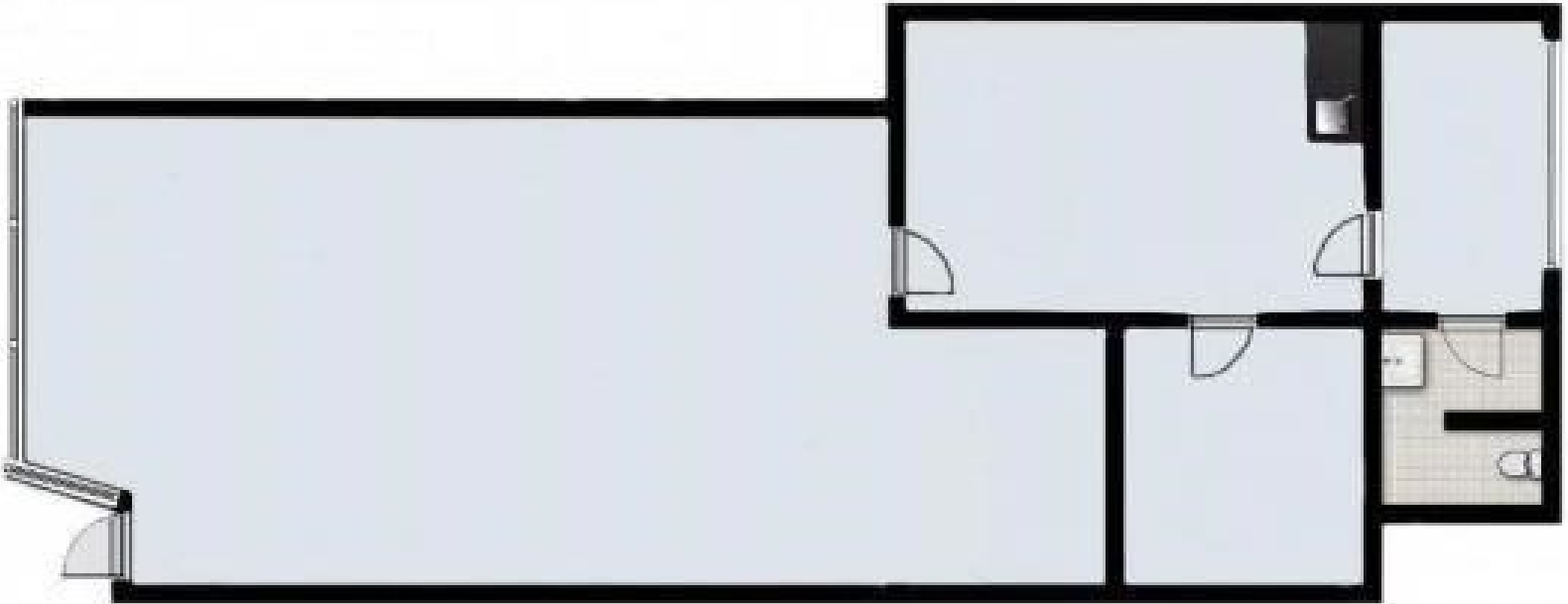


**BENCHMARK**  
COMMERCIAL

194B Lords Place, Orange NSW 2800

**Telephone:** (02) 6362 5988  
**Email:** sales@bmpa.com.au  
**Web:** www.bmpa.com.au

ALL AREAS AND FIGURES APPROX. ONLY. All precaution has been taken to establish the accuracy of the information contained in this brochure. It does not, however, constitute any representation by the Vendor or Agent.



**245 SUMMER STREET**

PLEASE NOTE: NOT TO SCALE