

# For Lease

## Lot 28 4 Ash Street ORANGE

### NEW INDUSTRIAL STRATA UNIT

Orange is the largest urban area in Central West New South Wales, population circa 42,500.

The diversified regional economy of Orange is centred on mining, health services and government administration.

### Location

Located on the southern side of Ash Street in Leewood Industrial Estate, approximately 2.8 kilometers south of Orange CBD.

### Description

New strata title industrial unit  
Quality built, tilt concrete panel construction  
Full concrete common area hardstand and driveways  
1 onsite car parks  
Glazed PA door

Warehouse Lighting: High Bay LED  
Roller Door Height: 4.80 metres  
Parking: 1 onsite  
3 Phase Electricity Supply: Yes  
Secure Yard: Yes

Factory W'hse m <sup>2</sup>	Office Amenities m <sup>2</sup>	Other m <sup>2</sup>	Total Bldg m <sup>2</sup>	Rent (Ex GST) \$pa	\$/m <sup>2</sup>	Net/ Gross
96			96	\$18,240	\$190	Gross

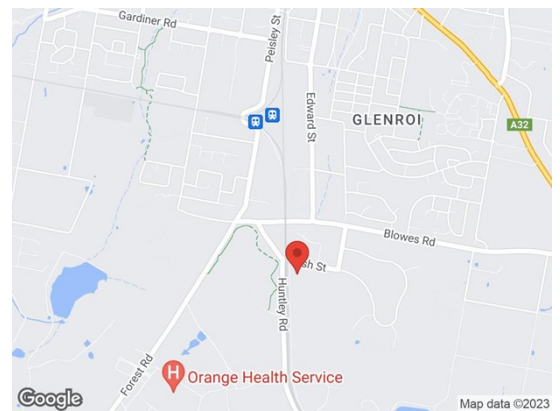
### Site Details

**Land Area:** 110 sqm  
**Zoning:** E4 General Industrial

### For more information please contact

Nigel Staniforth  
0401 279 795

David Hall  
0429 656 101

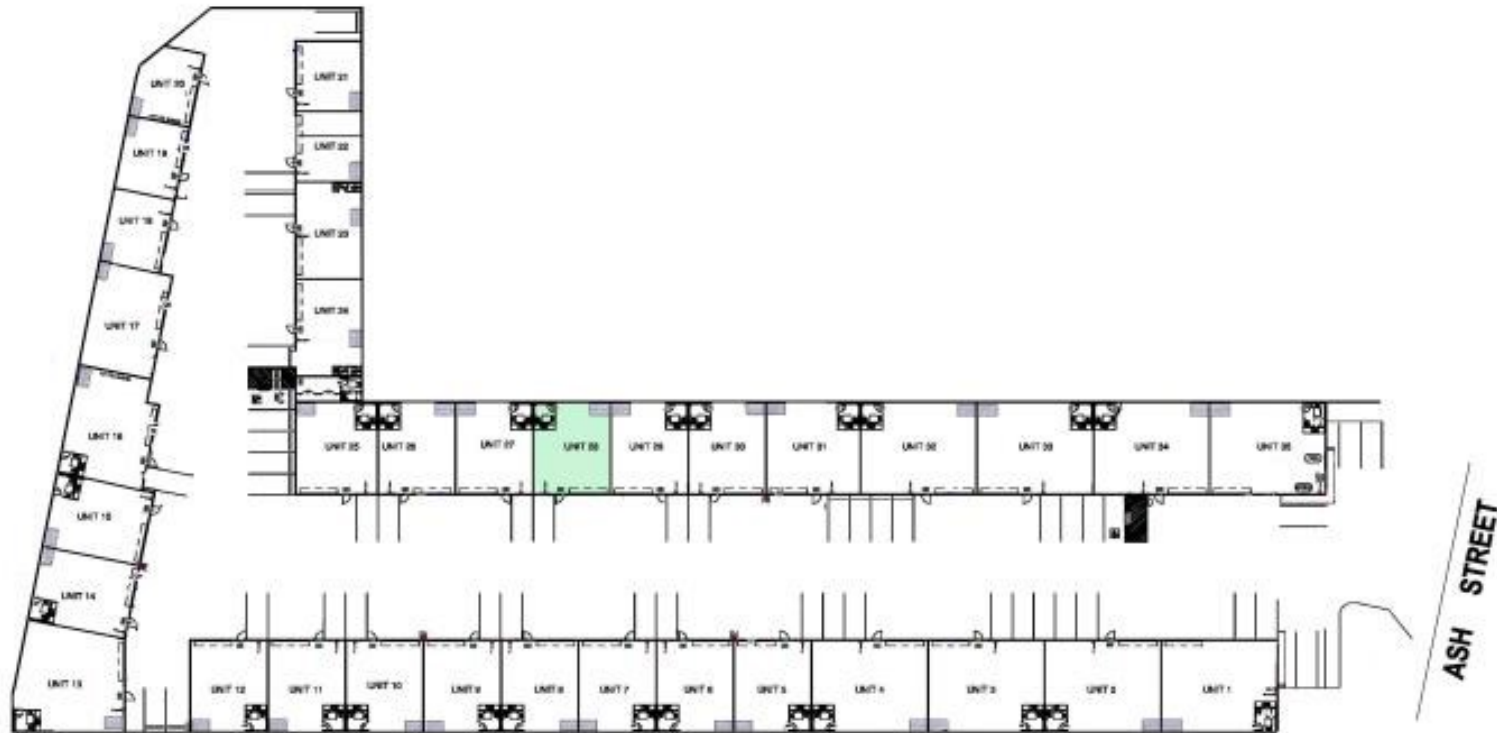


**BENCHMARK**  
COMMERCIAL

194B Lords Place, Orange NSW 2800

Telephone: (02) 63 62 5988  
Email: sales@bmpa.com.au  
Web: www.bmpa.com.au

DANE LANE



ASH STREET