

# For Lease

82-102 Summer Street ORANGE

## THE VILLAGE ON SUMMER STREET

Orange is the largest urban area in Central West New South Wales, population circa 42,500.

The diversified regional economy of Orange is centred on mining, health services and government administration.

## Location

Situated in the heart of Orange CBD

## Description

Recently refurbished retail shopping center in the heart of Orange CBD

Anchor tenants include Dan Murphy's and Supa IGA

10 specialty shops

Designated loading dock for specialty shops

High annual center trade figures and excellent pedestrian traffic volumes

Parking: 280 on grade centre car park

Zoning: E2 Commercial Centre

Tenancy	Area m <sup>2</sup>	Rent (Ex GST)		Net/Gross
		\$pa	\$/week	
Shop 7	25	\$35,000	\$673	Net

## For more information please contact

David Hall  
0429 656 101

Nigel Staniforth  
0401 279 795



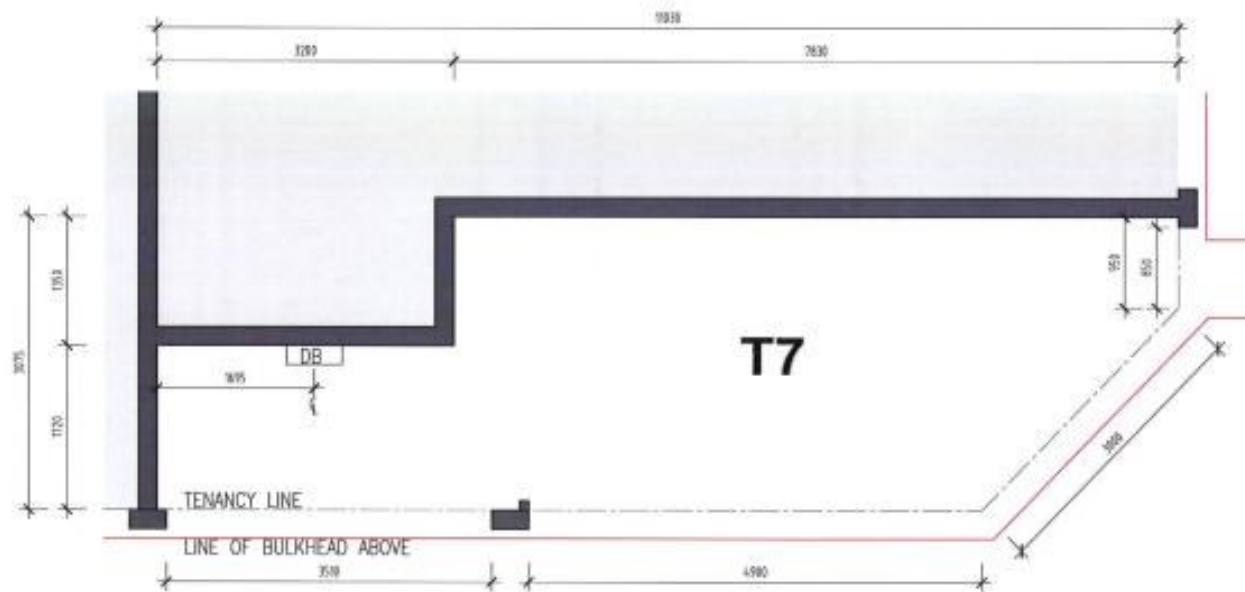
**BENCHMARK**  
COMMERCIAL

194B Lords Place, Orange NSW 2800

Telephone: (02) 63 62 5988

Email: sales@bmpa.com.au

Web: www.bmpa.com.au



01 EXISTING PLAN  
SCALE 1:50