

# For Lease

## Centrepont 226-232 Summer Street ORANGE

### PRIME 'A' CLASS OFFICE ACCOMMODATION

Orange is the largest urban area in Central West New South Wales, population circa 42,500.

The diversified regional economy of Orange is centred on mining, health services and government administration.

### Location

Situated in the heart of the CBD on the sunny side of the main retail strip between the Commonwealth Bank and Post Office.

### Description

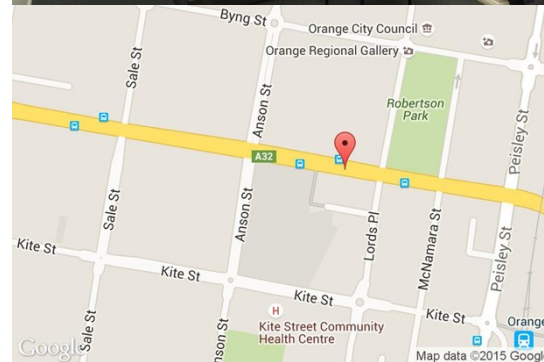
Level 2 Office Suite – 50 sqm | Carpeted & Air-Conditioned | Affordable Rental

An excellent opportunity to secure a 50 sqm level 2 office suite in a thriving retail and business hub. This well-presented space is carpeted, air-conditioned, and available at a modest shop-top rental—ideal for professionals, startups, or service-based businesses.

- Prime Location
- 50 sqm office space
- Carpeted & air-conditioned
- Affordable rental rates
- Surrounded by long-term, successful businesses

Parking: Close to public car park

Zoning: E2 Commercial Centre



Tenancy	Area m <sup>2</sup>	Rent (Ex GST)		Net/Gross
		\$pa	\$/m <sup>2</sup>	
Level Two Suite 9	50	\$16,900	\$338	Net

### For more information please contact

Nigel Staniforth  
0401 279 795

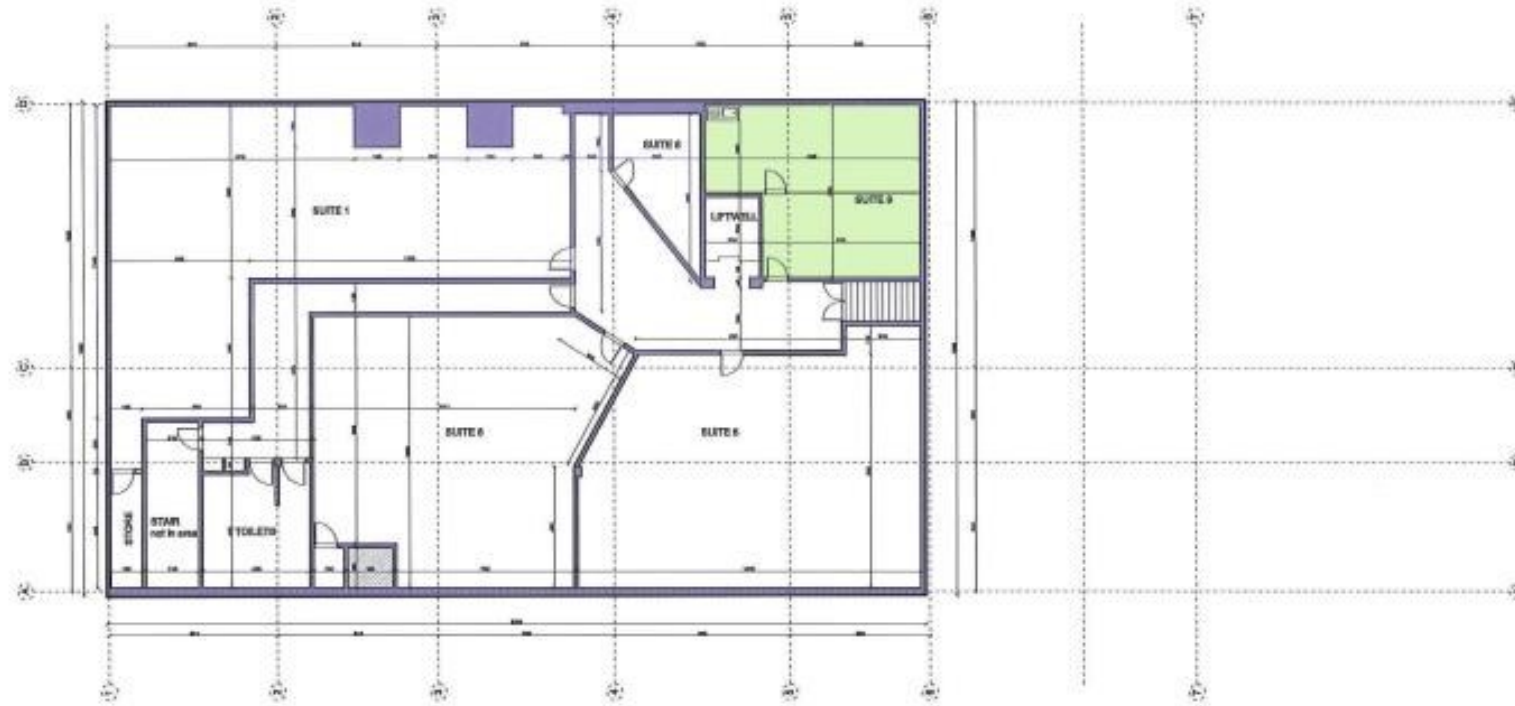
David Hall  
0429 656 101



**BENCHMARK**  
COMMERCIAL

194B Lords Place, Orange NSW 2800

Telephone: (02) 63 62 5988  
Email: sales@bmpa.com.au  
Web: www.bmpa.com.au



**EXISTING 2nd FLOOR PLAN**

1:160

- 1. FINISH
- 2. FINISH
- 3. FINISH
- 4. FINISH

PROJECT TITLE:  
 PROJECT NO:  
 DRAWING TITLE:  
 EXISTING 2nd FLOOR PLAN

SCALE: 1/8" = 1'-0"  
**A003**