

# For Lease

## Centrepont 226-232 Summer Street ORANGE

### CENTRAL CBD RETAIL & OFFICE SUITES

Orange is the largest urban area in Central West New South Wales, population circa 42,500.

The diversified regional economy of Orange is centred on mining, health services and government administration.

### Location

Situated in the heart of the CBD on the sunny side of the main retail strip between the Commonwealth Bank and Post Office.

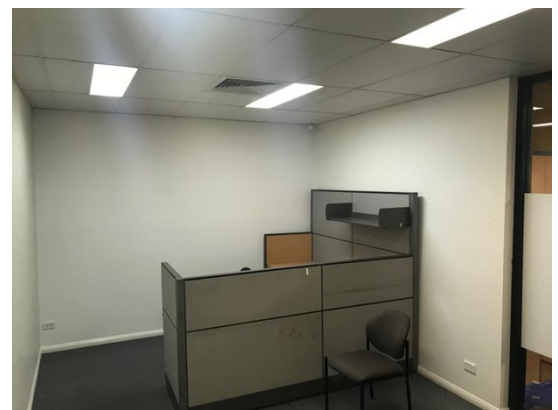
### Description

Central CBD retail & office suites. Prized location on main retail strip adjoining Post Office and 401 space public carpark. Magnificent, renovated landmark centre with lift access, modern amenities, daily cleaning and security patrols.

Amenities: Shared  
Ceiling: Mixed Construction  
Lighting: Mixed Configuration  
Air Conditioning: Yes  
Data Cabling: Yes  
Security System: No

Parking: Close to public car park

Zoning: E2 Commercial Centre



Tenancy	Area m <sup>2</sup>	Rent (Ex GST)		Net/Gross
		\$pa	\$/m <sup>2</sup>	
Level Two Suite 9	50	\$16,900	\$338	Net

### For more information please contact

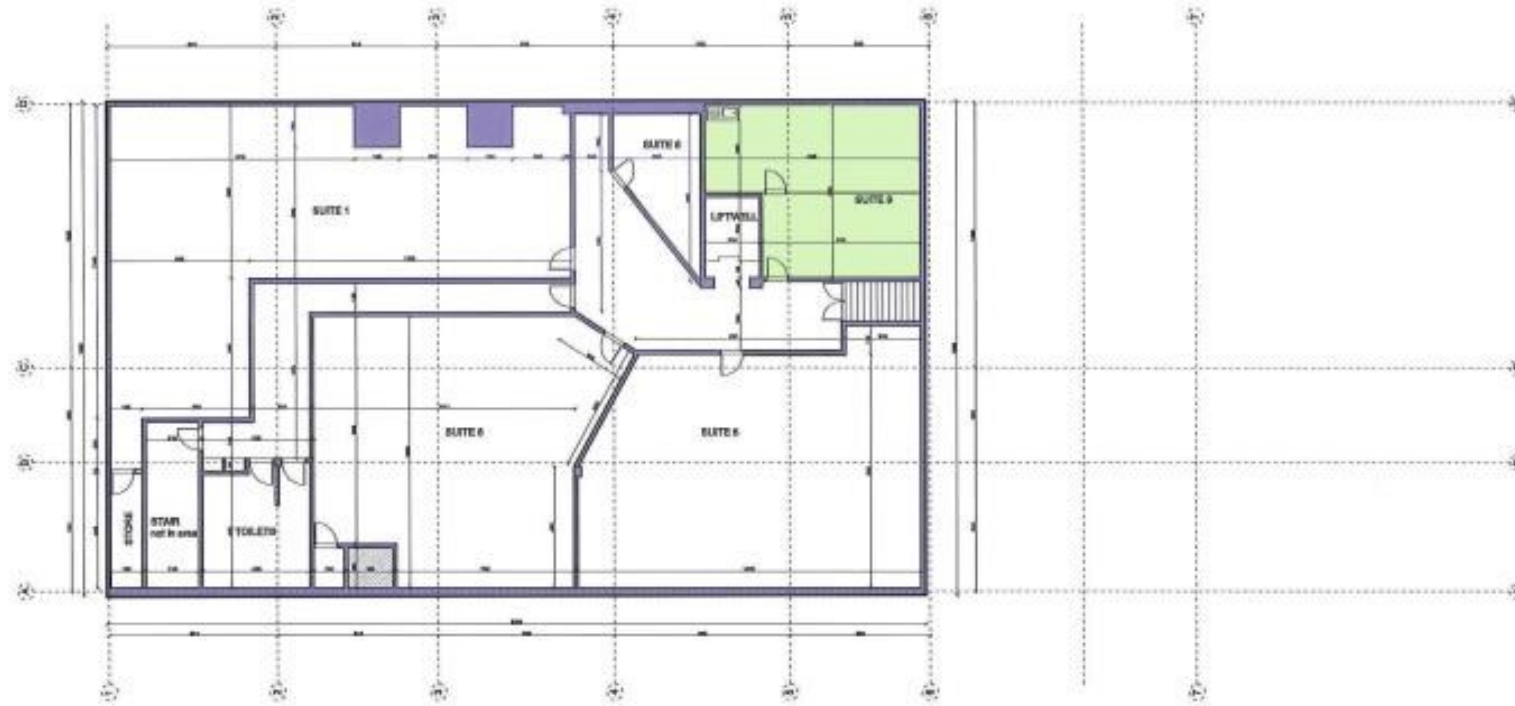
Nigel Staniforth  
0401 279 795

David Hall  
0429 656 101



194B Lords Place, Orange NSW 2800

Telephone: (02) 63 62 5988  
Email: sales@bmpa.com.au  
Web: www.bmpa.com.au



**EXISTING 2nd FLOOR PLAN**

1:160

- 1. FINISH
- 2. FINISHING
- 3. FINISHING
- 4. FINISHING

PROJECT TITLE:  
 PROJECT NO:  
 DRAWING TITLE:  
 EXISTING 2nd FLOOR PLAN

SCALE: 1/8"=1'-0"  
**A003**