

# For Lease

62-64 Lords Place ORANGE

## OFFICE AND WAREHOUSE

Orange is the largest urban area in Central West New South Wales, population circa 42,500.

The diversified regional economy of Orange is centred on mining, health services and government administration.

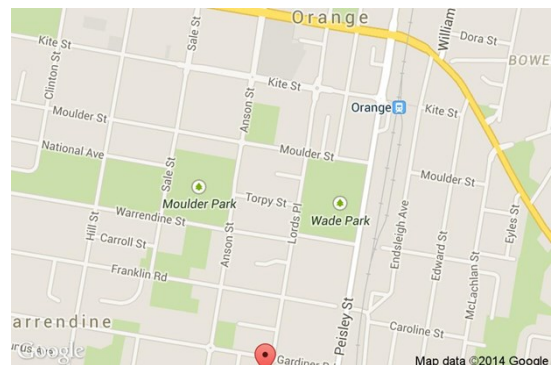
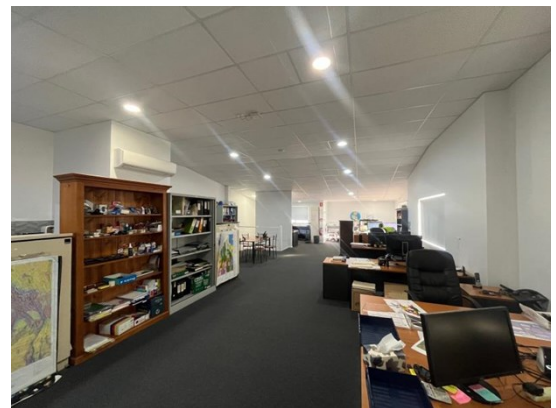
## Location

Located in the Lords Place South industrial precinct, 1.3 kilometres south of the Orange CBD.

## Description

Open plan office and high clearance warehouse.  
First floor open plan office  
Reverse cycle air-conditioning, kitchenette and unisex toilet  
Excellent natural light  
Warehouse has 2 roller doors and LED lighting  
Additional ground floor office space may be available by negotiation

Warehouse Lighting: Mixed Configuration  
Roller Door Height: 4 metres  
Parking: Onsite  
3 Phase Electricity: Yes  
Secure Yard: No  
  
Zoning: E4 General Industrial



Tenancy	Offices Amenities m <sup>2</sup>	W'hse m <sup>2</sup>	Other m <sup>2</sup>	Total Bldg m <sup>2</sup>	Rent (Ex GST)		Net/ Gross
					\$/week	\$/pa/m <sup>2</sup>	
Unit 2	153	120		273	\$769	\$147	Gross

## For more information please contact

David Hall  
0429 656 101

Nigel Staniforth  
0401 279 795



**BENCHMARK**  
COMMERCIAL

194B Lords Place, Orange NSW 2800

Telephone: (02) 63 62 5988  
Email: sales@bmpa.com.au  
Web: www.bmpa.com.au

