

# For Lease

315-323 Summer Street ORANGE

## HIGH EXPOSURE CBD OFFICE/RETAIL SUITES

Orange is the largest urban area in Central West New South Wales, population circa 42,500.

The diversified regional economy of Orange is centred on mining, health services and government administration.

### Location

Located in the CBD on the corner of Peisley Street & Summer Street.

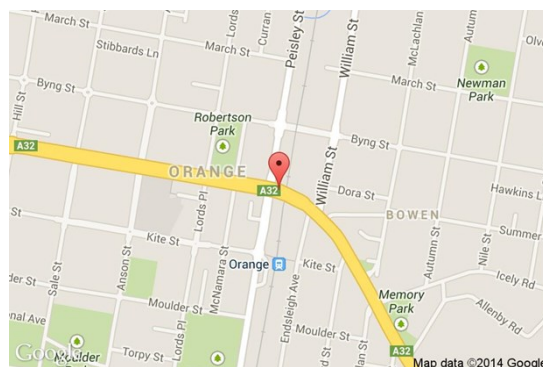
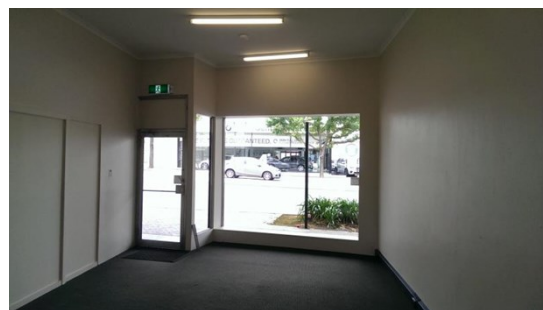
### Description

High exposure CBD corner position on highway  
Multi tenant commercial building  
Modern air-conditioned office/retail suites  
On-site car parking  
Lessee has access to well-priced electricity power (due to building solar panels)  
Rear safe storage shed also available to lease

Amenities: Shared  
Ceiling: Plasterboard  
Lighting: Mixed Configuration  
Air Conditioning: Yes  
Data Cabling: Yes  
Security System: Yes

Parking: 1 onsite car space

Zoning: E2 Commercial Centre



**BENCHMARK**  
COMMERCIAL

194B Lords Place, Orange NSW 2800

Telephone: (02) 63 62 5988  
Email: sales@bmpa.com.au  
Web: www.bmpa.com.au

### For more information please contact

Nigel Staniforth      David Hall  
0401 279 795      0429 656 101



**BENCHMARK**  
COMMERCIAL

