

For Lease

122-124 Kite Street ORANGE

THE HUB ON KITE - SERVICED OFFICES

Orange is the largest urban area in Central West New South Wales, population circa 42,500.

The diversified regional economy of Orange is centred on mining, health services and government administration.

Location

Situated on the corner of Lords Place and Kite street in the heart of Orange CBD with public car park opposite

Description

Modern state of the art facility designed for occupiers in need of an office friendly environment in the CBD.

4 fully fitted-out office suites 11sqm to 29sqm

Printer & data allowances

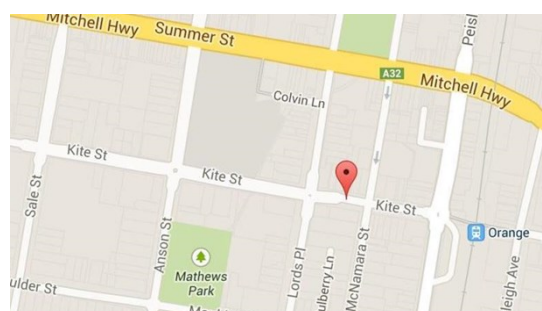
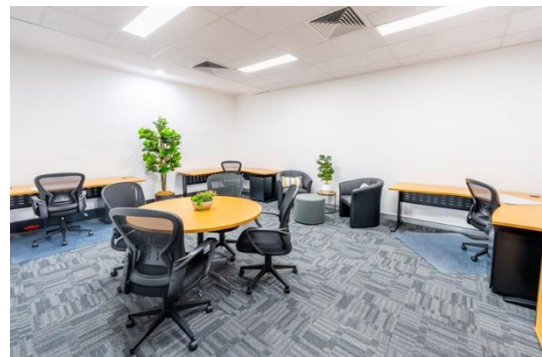
Electricity, security & cleaning included in rental

Modern kitchenette/breakout area, large conference room & secured amenities, after hours access

Amenities: Shared
Ceiling: Grid
Lighting: Mixed Configuration
Air Conditioning: Yes
Data Cabling: Yes
Security System: Yes

Parking: On street car parking & Ophir Public car park is adjacent to the property

Zoning: E2 Commercial Centre



BENCHMARK
COMMERCIAL

194B Lords Place, Orange NSW 2800

Telephone: (02) 63 62 5988
Email: sales@bmpa.com.au
Web: www.bmpa.com.au

Tenancy	Area m ²	Rent (Ex GST)		Net/Gross
		\$pa	\$/Week	
Level 1 Suite 5 - Office 1.	29	\$20,800	\$400/week + GST	Gross

For more information please contact

Nigel Staniforth
0401 279 795

David Hall
0429 656 101

