

For Lease

122-124 Kite Street ORANGE

THE HUB ON KITE - SERVICED OFFICES

Orange is the largest urban area in Central West New South Wales, population circa 42,500.

The diversified regional economy of Orange is centred on mining, health services and government administration.

Location

Situated on the corner of Lords Place and Kite street in the heart of Orange CBD with public car park opposite

Description

Modern state of the art facility which is designed for all requirements by occupiers in need of an office friendly environment located in the CBD.

The 8 office suites range from 11sqm to 29sqm

Offices fully fitted out

Printer & data allowances

Electricity, security & cleaning included in rental

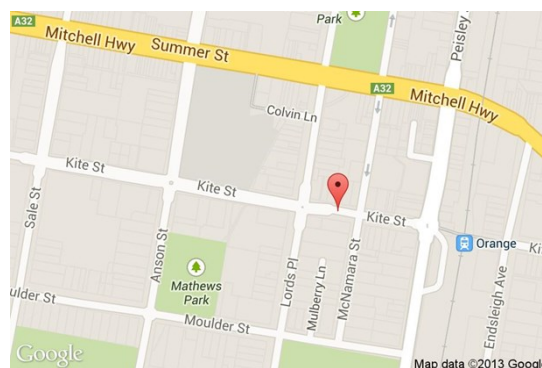
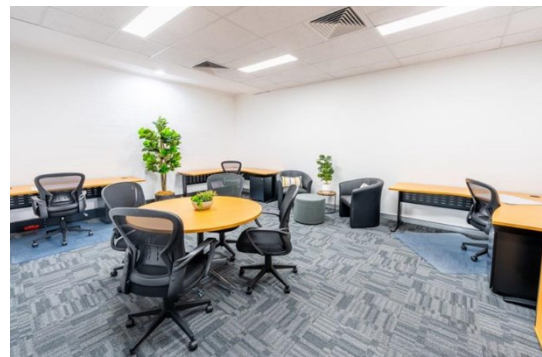
After hours access

Access to modern kitchenette/break out area, a large conference room & secured amenities

Amenities: Shared
Ceiling: Grid
Lighting: Mixed Configuration
Air Conditioning: Yes
Data Cabling: Yes
Security System: Yes

Parking: On street car parking & Ophir Public car park is adjacent to the property

Zoning: E2 Commercial Centre



Tenancy	Area m ²	Rent (Ex GST)		Net/Gross
		\$pa	\$/Week	
Level 1 Suite 5 - Office 1.	29	\$20,800	\$400/week + GST	Gross

For more information please contact

Nigel Staniforth
0401 279 795

David Hall
0429 656 101


BENCHMARK
COMMERCIAL

194B Lords Place, Orange NSW 2800

Telephone: (02) 63 62 5988
Email: sales@bmpa.com.au
Web: www.bmpa.com.au

