

# For Lease

## Lot 5 21 Peisley Street ORANGE

### CENTRALLY LOCATED WAREHOUSE/UNIT

Orange is the largest urban area in Central West New South Wales, population circa 42,500.

The diversified regional economy of Orange is centred on mining, health services and government administration.

### Location

Situated approximately 1.5 kilometres south of Orange CBD in the Peisley Street industrial precinct.

### Description

New strata title industrial unit  
Quality built, tilt concrete panel construction  
Full concrete common area hardstand and driveways  
Large Mechanical roller door  
Glazed PA doors  
Kitchenette and accessible toilet  
Two onsite car parks

Warehouse Lighting: High Bay LED  
Roller Door Height: 5 metres  
Parking: Onsite  
3 Phase Electricity Supply: Yes  
Secure Yard: No

Factory W'hse m <sup>2</sup>	Office Amenities m <sup>2</sup>	Other m <sup>2</sup>	Total Bldg m <sup>2</sup>	Rent (Ex GST) \$pa	\$/m <sup>2</sup>	Net/Gross
156	9		165	\$32,175	\$195	Gross

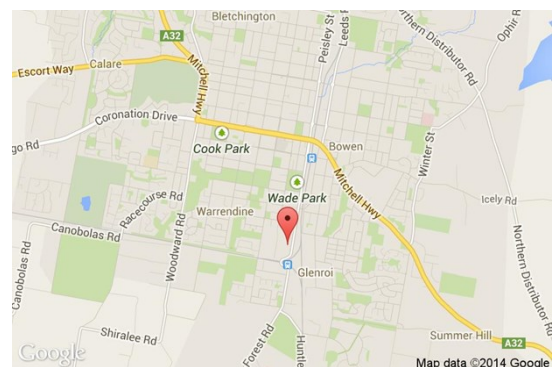
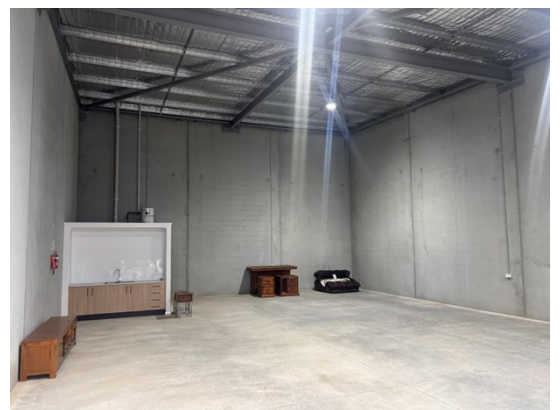
### Site Details

**Land Area:** 192 sqm  
**Zoning:** E4 General Industrial

### For more information please contact

Nigel Staniforth  
0401 279 795

David Hall  
0429 656 101



**BENCHMARK  
COMMERCIAL**

194B Lords Place, Orange NSW 2800

Telephone: (02) 63 62 5988  
Email: sales@bmpa.com.au  
Web: www.bmpa.com.au

