

For Lease

119 Byng Street ORANGE

CBD OFFICES WITH PARKING

Orange is the largest urban area in Central West New South Wales, population circa 42,500.

The diversified regional economy of Orange is centred on mining, health services and government administration.

Location

Situated in the courthouse precinct of the Orange CBD some 270 meters north of the Orange Post Office.

Description

Excellent location in Court House precinct of the CBD
Free standing brick building with on-site parking including lock up garage and carport
Accommodation includes reception, 4 offices, meeting room, kitchen & separate male and female amenities
Ducted reverse cycle air-conditioning and alarm system.
Freshly painted.

Amenities: Separate Male & Female
Ceiling: Plasterboard
Lighting: Mixed Configuration
Air Conditioning: Yes
Data Cabling: Yes
Alarm System: Yes

Parking: 6 car spaces on-site
Zoning: MU1 Mixed Use



Area m ²	Rent (Ex GST)		Net/Gross
	\$pa	\$/m ²	
129	\$51,500	\$399	Gross

For more information please contact

David Hall
0429 656 101

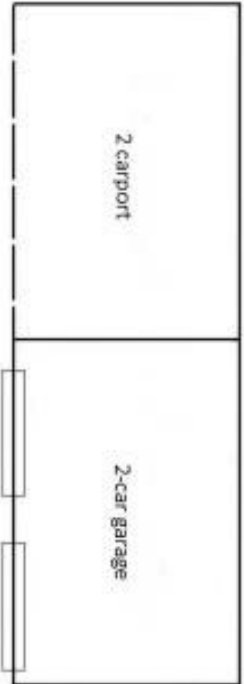
Nigel Staniforth
0401 279 795



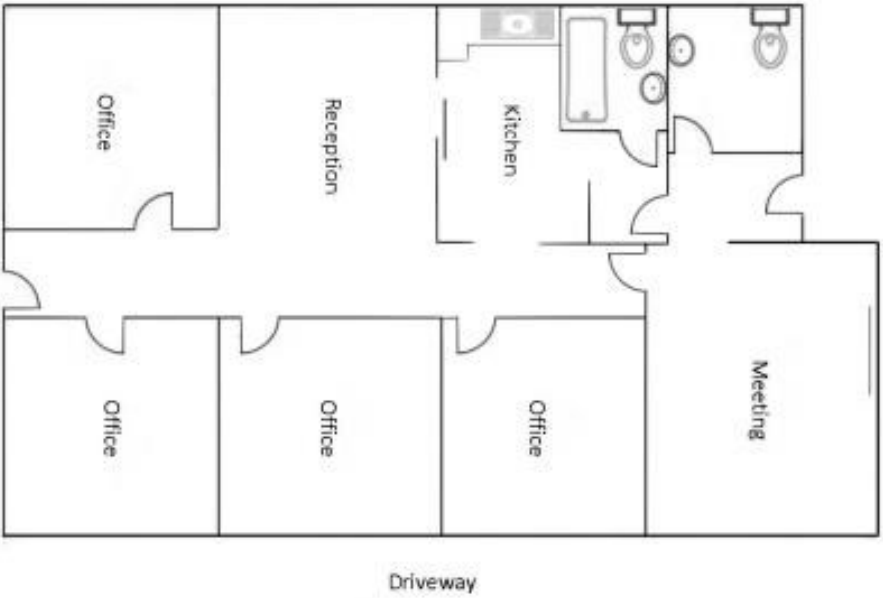
BENCHMARK
COMMERCIAL

194B Lords Place, Orange NSW 2800

Telephone: (02) 63 62 5988
Email: sales@bmpa.com.au
Web: www.bmpa.com.au



Concrete Hardstand



BYNG STREET