

# For Lease

119 Byng Street ORANGE

## CBD OFFICES WITH PARKING

Orange is the largest urban area in Central West New South Wales, population circa 42,500.

The diversified regional economy of Orange is centred on mining, health services and government administration.

## Location

Situated in the courthouse precinct of the Orange CBD some 270 meters north of the Orange Post Office.

## Description

Excellent location in Court House precinct of the CBD  
Free standing brick building with on-site parking including lock up garage and carport  
Accommodation includes reception, 4 offices, meeting room, kitchen & separate male and female amenities  
Ducted reverse cycle air-conditioning and alarm system.  
Freshly painted.

Amenities: Separate Male & Female  
Ceiling: Plasterboard  
Lighting: Mixed Configuration  
Air Conditioning: Yes  
Data Cabling: Yes  
Alarm System: Yes

Parking: 6 car spaces on-site  
Zoning: MU1 Mixed Use

Area m <sup>2</sup>	Rent (Ex GST)		Net/Gross
	\$pa	\$/m <sup>2</sup>	
129	\$51,500	\$399	Gross

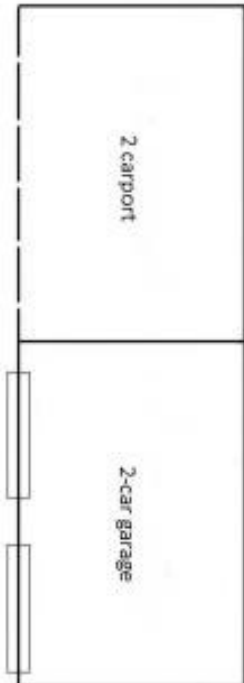


**BENCHMARK**  
COMMERCIAL

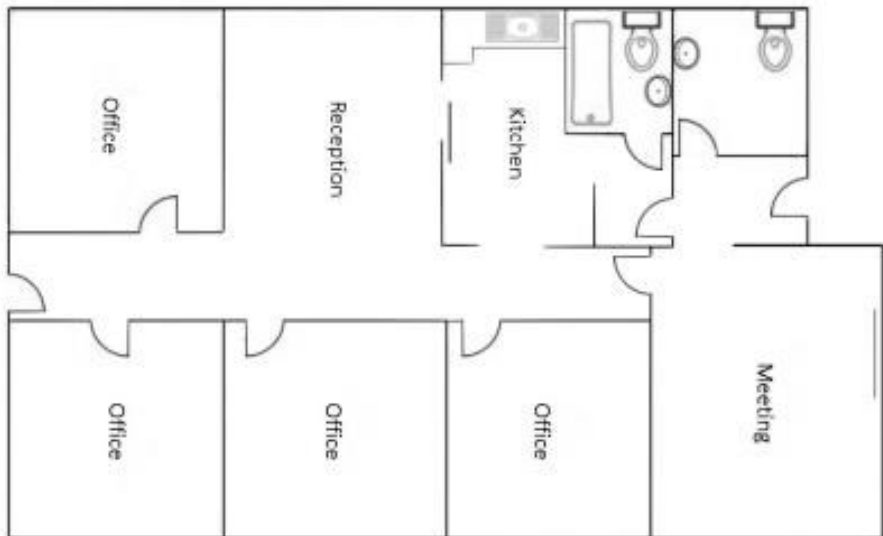
194B Lords Place, Orange NSW 2800

**Telephone:** (02) 63 62 5988  
**Email:** sales@bmpa.com.au  
**Web:** www.bmpa.com.au

ALL AREAS AND FIGURES APPROX. ONLY. All precaution has been taken to establish the accuracy of the information contained in this brochure. It does not, however, constitute any representation by the Vendor or Agent.



Concrete Hardstand



Driveway

BYNG STREET