

For Lease

179A Anson Street ORANGE

CENTRALLY LOCATED BLUECHIP OFFICE TENANCY

Orange is the largest urban area in Central West New South Wales, population circa 42,500.

The diversified regional economy of Orange is centred on mining, health services and government administration.

Location

Located on the south-west corner of Kite Street & Anson Street within Orange's CBD.

Description

A grade office tenancy
Centrally located
Modern fitout already in place
Three secure undercover onsite car parks

Amenities: Separate Male & Female
Ceiling: Grid
Lighting: Fluorescent
Air Conditioning: Yes
Data Cabling: Yes
Security System: Yes

Parking: 2 undercover onsite

Zoning: E2 Commercial Centre



Tenancy	Area m ²	Rent (Ex GST)		Net/Gross
		\$pa	\$/m ²	
Ground Suite 2	236	\$82,600	\$350	Net

For more information please contact

Nigel Staniforth
0401 279 795

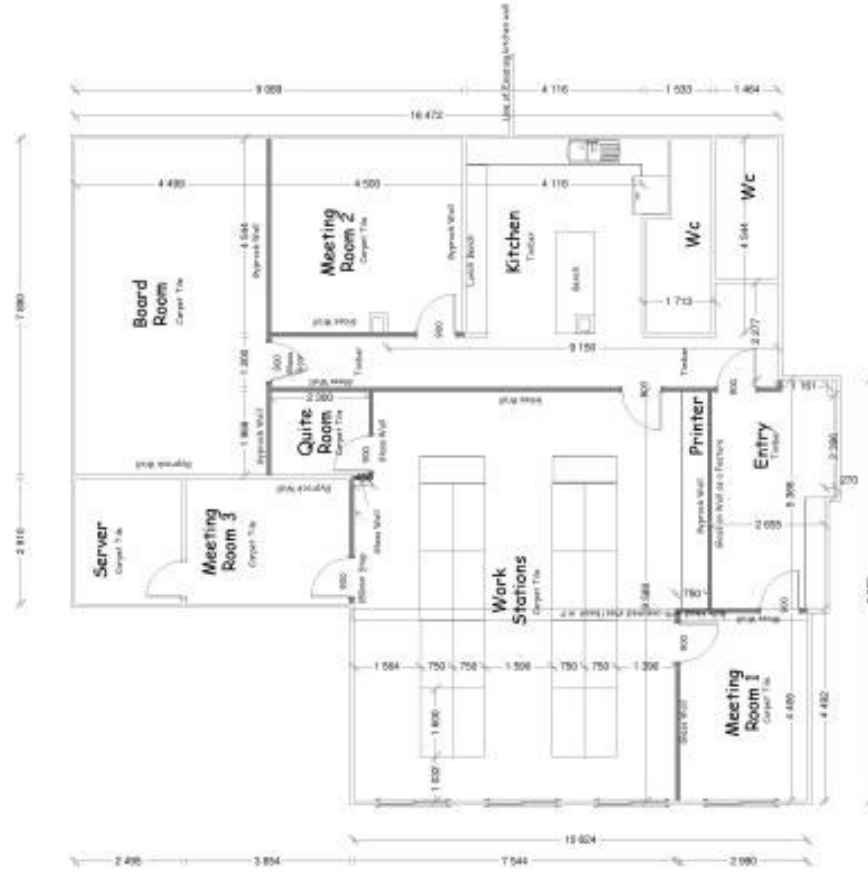
David Hall
0429 656 101


BENCHMARK
COMMERCIAL

194B Lords Place, Orange NSW 2800

Telephone: (02) 63 62 5988
Email: sales@bmpa.com.au
Web: www.bmpa.com.au

ALL AREAS AND FIGURES APPROX. ONLY. All precaution has been taken to establish the accuracy of the information contained in this brochure. It does not, however, constitute any representation by the Vendor or Agent.



All measurements
NEED to be checked
prior to final plans
being drawn