

# For Lease

179A Anson Street ORANGE

## CENTRALLY LOCATED BLUECHIP OFFICE TENANCY

Orange is the largest urban area in Central West New South Wales, population circa 42,500.

The diversified regional economy of Orange is centred on mining, health services and government administration.

### Location

Located on the south-west corner of Kite Street & Anson Street within Orange's CBD.

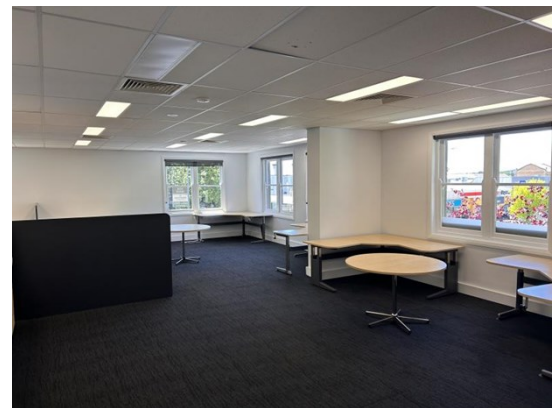
### Description

A grade office tenancy  
Centrally located  
Modern fitout already in place  
Three secure undercover onsite car parks

Amenities: Separate Male & Female  
Ceiling: Grid  
Lighting: Fluorescent  
Air Conditioning: Yes  
Data Cabling: Yes  
Security System: Yes

Parking: 2 undercover onsite

Zoning: E2 Commercial Centre



| Tenancy            | Area<br>m <sup>2</sup> | Rent (Ex GST) |                   | Net/Gross |
|--------------------|------------------------|---------------|-------------------|-----------|
|                    |                        | \$pa          | \$/m <sup>2</sup> |           |
| Level 1 Suite<br>1 | 238                    | \$77,350      | \$325             | Net       |

### For more information please contact

Nigel Staniforth  
0401 279 795

David Hall  
0429 656 101



194B Lords Place, Orange NSW 2800

Telephone: (02) 63 62 5988  
Email: sales@bmpa.com.au  
Web: www.bmpa.com.au

