

# For Lease

## 150-154 Summer Street ORANGE

### LARGE COMMERCIAL TENANCY IN A VIBRANT SHOPPING CENTRE

Orange is the largest urban area in Central West New South Wales, population circa 42,500.

The diversified regional economy of Orange is centred on mining, health services and government administration.

### Location

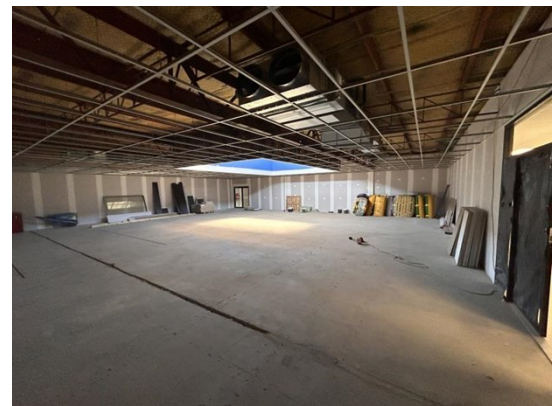
Located on the sunny side of the main retail strip in the heart of the CBD

### Description

Large open plan tenancy with disabled access  
Tenancy undergoing a full refurbishment.  
Good window frontage onto Arcade  
This vibrant commercial complex is anchored by Harris Farm Markets plus a number of national and boutique/specialty retailers.  
Well suited to a fitness center/gymnasium, recreation or retail use.

Parking: Adjoins CBD's largest public car park

Zoning: E2 Commercial Centre



Tenancy	Area m <sup>2</sup>	Rent (Ex GST)		Net/Gross
		\$pa	\$/m <sup>2</sup>	
Level 1 Suite 8b	560	\$120,000	\$214	Gross

### For more information please contact

Nigel Staniforth  
0401 279 795

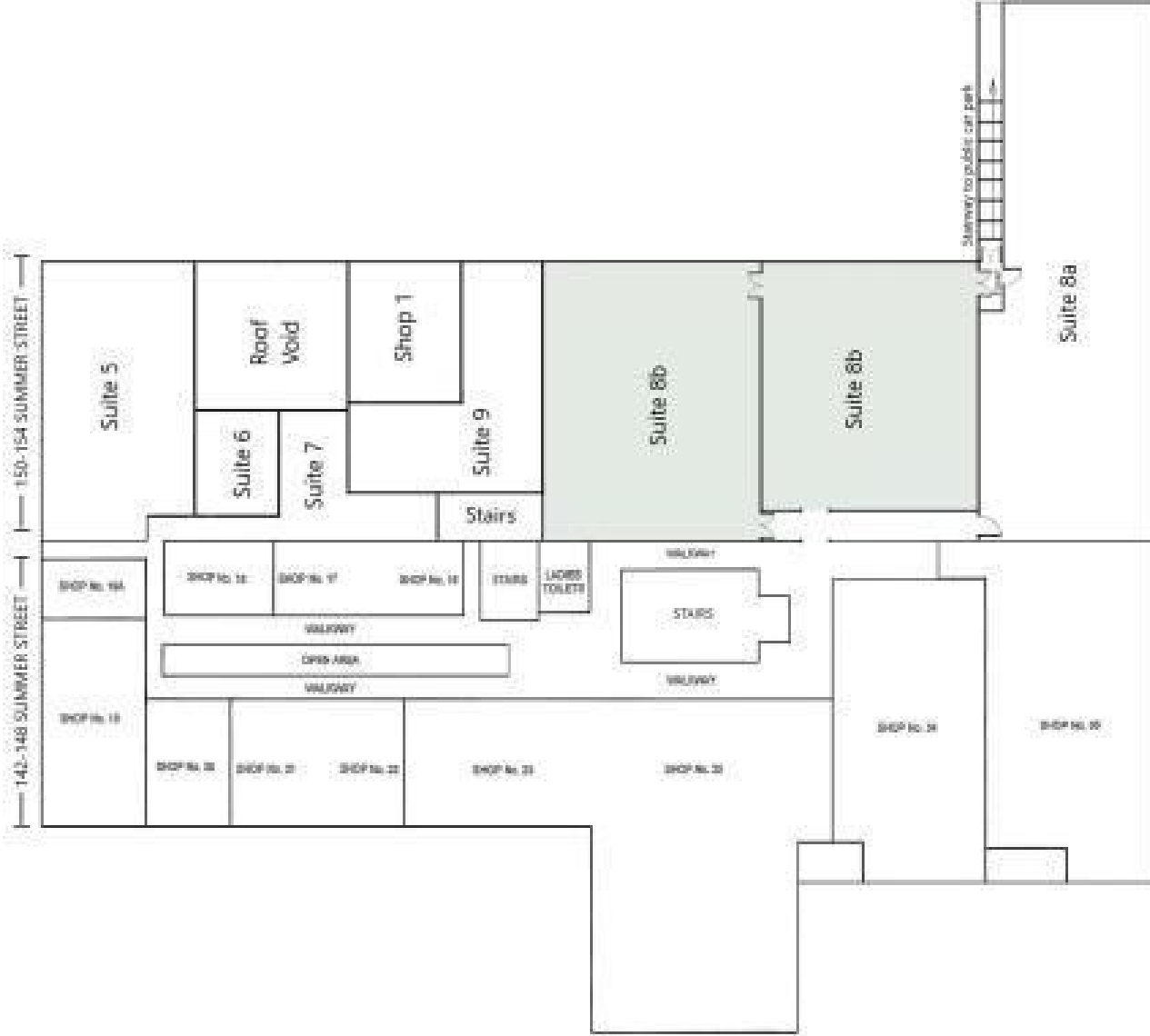
David Hall  
0429 656 101



194B Lords Place, Orange NSW 2800  
Telephone: (02) 63 62 5988  
Email: sales@bmpa.com.au  
Web: www.bmpa.com.au

**FIRST FLOOR**

SUMMER STREET



Public Car Park