

For Lease

150-154 Summer Street ORANGE

LARGE COMMERCIAL TENANCY IN A VIBRANT SHOPPING CENTRE

Orange is the largest urban area in Central West New South Wales, population circa 42,500.

The diversified regional economy of Orange is centred on mining, health services and government administration.

Location

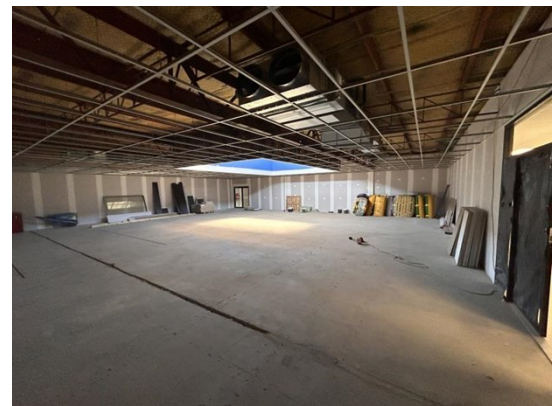
Located on the sunny side of the main retail strip in the heart of the CBD

Description

Large open plan tenancy with disabled access
Tenancy undergoing a full refurbishment.
Good window frontage onto Arcade
This vibrant commercial complex is anchored by Harris Farm Markets plus a number of national and boutique/specialty retailers.
Well suited to a fitness center/gymnasium, recreation or retail use.

Parking: Adjoins CBD's largest public car park

Zoning: E2 Commercial Centre



| Tenancy | Area m ² | Rent (Ex GST) | | Net/Gross |
|---------------------|------------------------|---------------|-------------------|-----------|
| | | \$pa | \$/m ² | |
| Level 1 Suite 8b | 560 | \$120,000 | \$214 | Gross |

For more information please contact

Nigel Staniforth
0401 279 795

David Hall
0429 656 101



194B Lords Place, Orange NSW 2800
Telephone: (02) 63 62 5988
Email: sales@bmpa.com.au
Web: www.bmpa.com.au

FIRST FLOOR

SUMMER STREET

