

For Lease

Orange Arcade 142-148 Summer Street ORANGE

WELL PRICED OFFICE/RETAIL SPACE

Orange is the largest urban area in Central West New South Wales, population circa 42,500.

The diversified regional economy of Orange is centred on mining, health services and government administration.

Location

Situated in the heart of Orange CBD on the sunny side of the retail strip.

Description

Centrally located on the main retail strip
Retail shopping arcade with 24 shops/suites
Vibrant mix of boutique/specialty shops and larger retailers such as Harris Farm Markets
Adjacent to national retailers and Woolworths car park

First floor tenancy with good glass frontage onto Arcade
Currently split into 3 rooms and a small internal kitchenette

Parking: Public car park adjoins

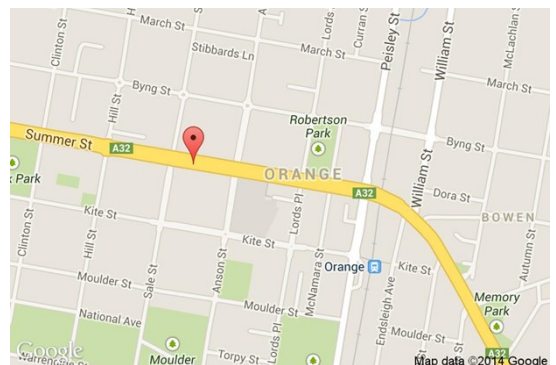
Zoning: E2 Commercial Centre

| Tenancy | Area m ² | Rent (Ex GST) | | Net/Gross |
|--------------------------|------------------------|---------------|---------|-----------|
| | | \$pa | \$/week | |
| Level 1 Suite 16 & 17 | 67 | \$22,000 | \$423 | Net |

For more information please contact

Nigel Staniforth
0401 279 795

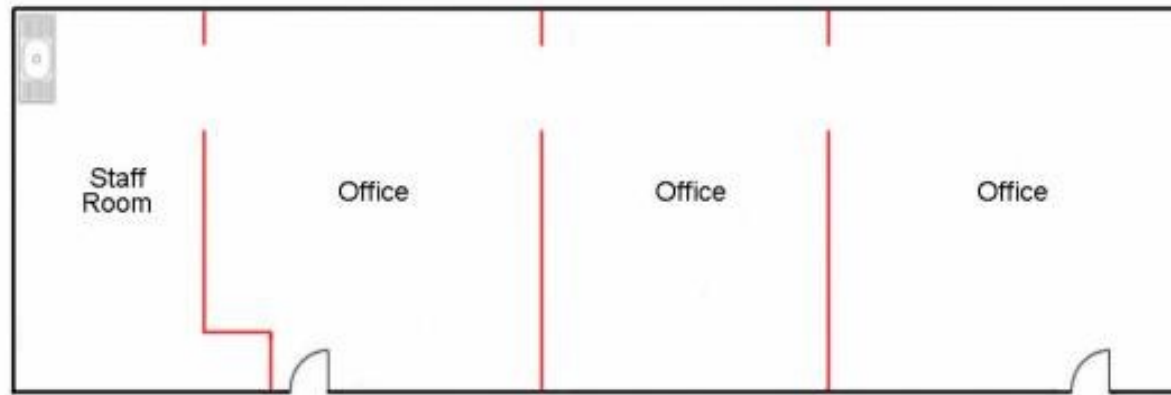
David Hall
0429 656 101



BENCHMARK
COMMERCIAL

194B Lords Place, Orange NSW 2800

Telephone: (02) 63 62 5988
Email: sales@bmpa.com.au
Web: www.bmpa.com.au



— Non-structural walls