

For Lease

109 Moulder Street ORANGE

CENTRAL CBD OFFICE BUILDING

Orange is the largest urban area in Central West New South Wales, population circa 40,000.

The diversified regional economy of Orange is centred on mining, health services and government administration.

Location

Located on the northern side of the street within Orange's CBD.

Description

Neat & tidy office accommodation
Onsite car parks
Disabled access and amenities
Office areas, boardroom and reception
Kitchenette & storage room

Amenities: Unisex
Ceiling: Mixed Construction
Lighting: Mixed Configuration
Air Conditioning: Yes
Data Cabling: Yes
Alarm System: Yes

Parking: Onsite

Zoning: B3 Commercial Core

Area m ²	Rent (Ex GST)			Net/Gross
	\$pa	\$/m ²	\$/week	
95	\$37,493	\$395	\$721 / week+ GST	Gross

For more information please contact

Nigel Staniforth

0401 279 795

David Hall

0429 656 101

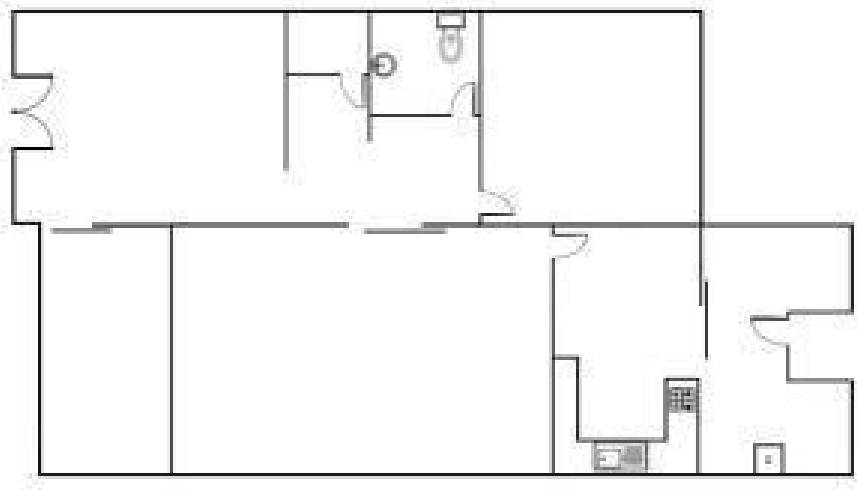


BENCHMARK
COMMERCIAL

194B Lords Place, Orange NSW 2800

Telephone: (02) 63 62 5988
Email: sales@bmpa.com.au
Web: www.bmpa.com.au

Rear Car Park



MOULDER STREET