

# For Lease

225-227 Lords Place ORANGE

## HIGH EXPOSURE CBD PROPERTY

Orange is the largest urban area in Central West New South Wales, population circa 42,500.

The diversified regional economy of Orange is centred on mining, health services and government administration.

## Location

Situated in the heart of the ORANGE CBD opposite Robertson Park on the west side of Lords Place

## Description

Very central location  
Ground floor and first tenancies available separately or as a whole  
Good window frontage over Robertson Park  
Reverse cycle air-conditioner  
Suit office, retail or allied health (STCA)  
Kitchenette & shared amenities

Parking: Onstreet

Zoning: B3 Commercial Core

Tenancy	Area m <sup>2</sup>	Rent (Ex GST)		Net/Gross
		\$pa	\$/m <sup>2</sup>	
Level 1 Suite 2	130	\$26,000	\$200	Gross

## For more information please contact

Nigel Staniforth  
0401 279 795

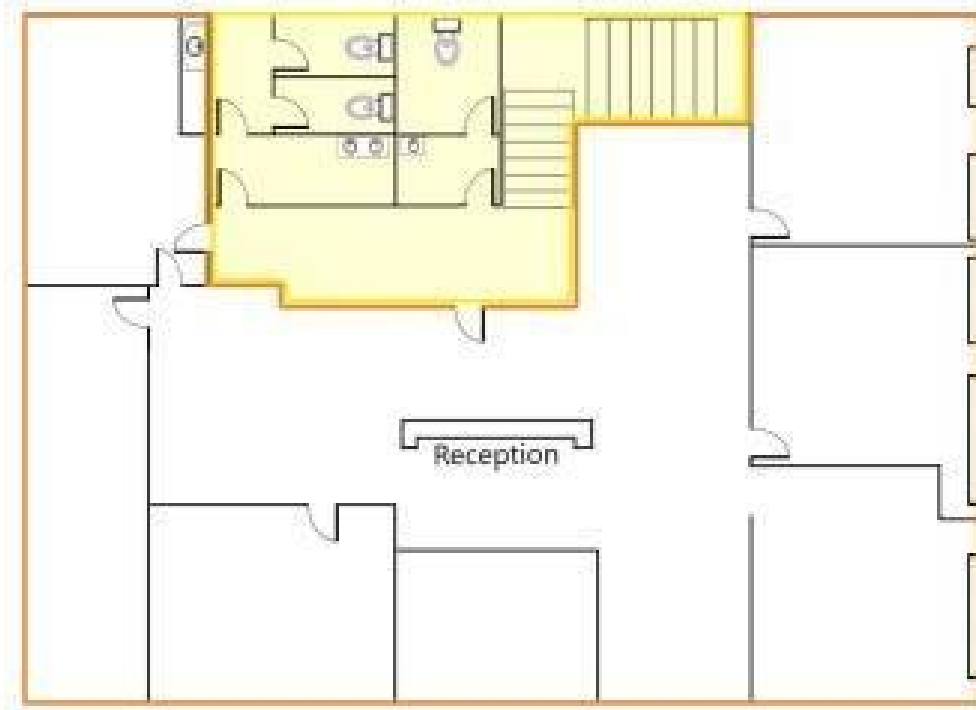
David Hall  
0429 656 101



  
**BENCHMARK**  
COMMERCIAL

194B Lords Place, Orange NSW 2800

Telephone: (02) 63 62 5988  
Email: sales@bmpa.com.au  
Web: www.bmpa.com.au



FIRST FLOOR