

# For Lease

## McNamara House Ground Floor Suite 1 & 2 60-62 McNamara Street ORANGE

### A GRADE OFFICES

Orange is the largest urban area in Central West New South Wales, population circa 42,500.

The diversified regional economy of Orange is centred on mining, health services and government administration.

### Location

McNamara House is situated in the heart of Orange CBD in the retail, court house and civic precinct with stunning aspect and views across Robertson Park.

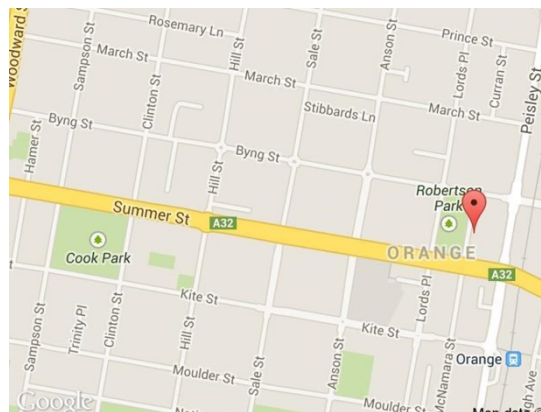
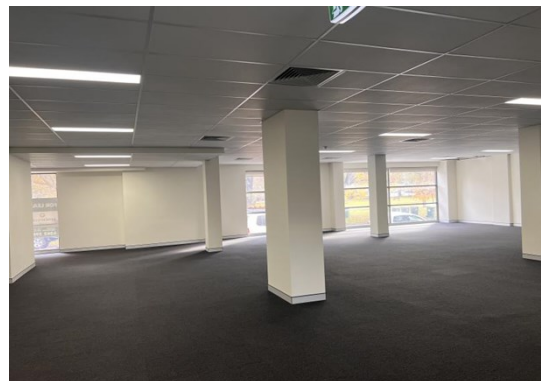
### Description

Ground floor tenancy with very good front and rear access  
Located in a prime position in the heart of the CBD overlooking Robertson Park with public car park adjoining at rear.  
Modern building with a history of blue-chip corporate tenants  
Lift + secure basement car parking.  
Lessor refurbishing the tenancy to a warm shell fit out

Parking: Basement car parking by negotiation

Zoning: E2 Commercial Centre

Price: Contact agent for details



### For more information please contact

Nigel Staniforth  
0401 279 795

David Hall  
0429 656 101



**BENCHMARK**  
COMMERCIAL

194B Lords Place, Orange NSW 2800

Telephone: (02) 63 62 5988  
Email: sales@bmpa.com.au  
Web: www.bmpa.com.au

