

# For Lease

## 242 Peisley Street ORANGE

### PRIME SITE ON PEISLEY STREET

Orange is the largest urban area in Central West New South Wales, population circa 42,500.

The diversified regional economy of Orange is centred on mining, health services and government administration.

### Location

Located on the eastern side of Peisley Street close to the Byng Street roundabout and opposite the Orange Museum and Civic Center precinct.

### Description

Prime location on busy Peisley Street between Pete's Car Wash & JAX Tyres

Sales yard or potential other uses (STCA)

Securely fenced with concrete hardstand and small sales office

#### RENT – WHOLE SITE AS IS (Ex GST)

**\$pa:** \$35,000

**\$/week:** \$673

*Outgoings payable in addition to rent*

### Site Details

**Land Area:** 490 sqm

**Zoning:** MU1 Mixed Use

#### For more information please contact

Nigel Staniforth  
0401 279 795

David Hall  
0429 656 101



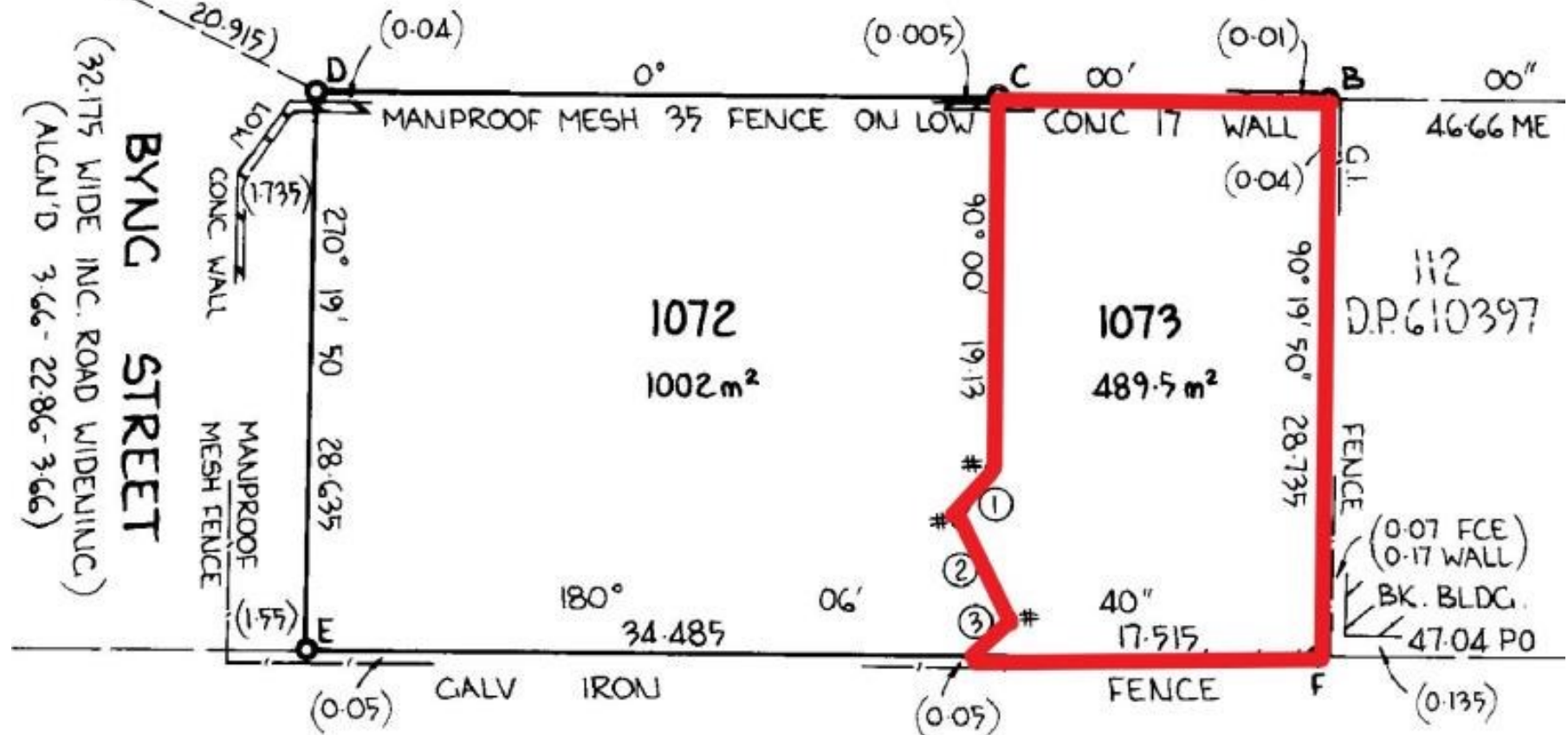
**BENCHMARK**  
COMMERCIAL

194B Lords Place, Orange NSW 2800

Telephone: (02) 63 62 5988  
Email: sales@bmpa.com.au  
Web: www.bmpa.com.au

M 2 (NOTED)  
 (355° 01' 18" 223.741) TO SSM 7782 PL.  
 (NOT EST'D)

**PEISLEY STREET** (ALGN'D 3.66 - 22.86 - 3.66)



**GREAT WESTERN RAILWAY** TO DUBBO

\* G.I. NAIL IN BITUMEN AT CORNER