

# For Lease

## Centrepont Arcade 226-232 Summer Street ORANGE

### CENTRAL CBD OFFICE SUITE

Orange is the largest urban area in Central West New South Wales, population circa 42,500.

The diversified regional economy of Orange is centred on mining, health services and government administration.

### Location

Situated in the heart of the CBD on the sunny side of the main retail strip between the Commonwealth Bank and Post Office.

### Description

Quality office accommodation in landmark CBD building  
Beautifully renovated and maintained building  
Common areas include lift, modern amenities, daily cleaning and security patrols  
Competitive rental rates & flexible lease terms  
Garbage charge & air-conditioning maintenance payable in addition to rent

Parking: Close to public car park

Zoning: B3 Commercial Core

Tenancy	Area m <sup>2</sup>	Rent (Ex GST)		Net/Gross
		\$pa	\$/week	
Level Three Suite 2	55	\$13,800	\$265	Gross

### For more information please contact

Nigel Staniforth  
0401 279 795

David Hall  
0429 656 101

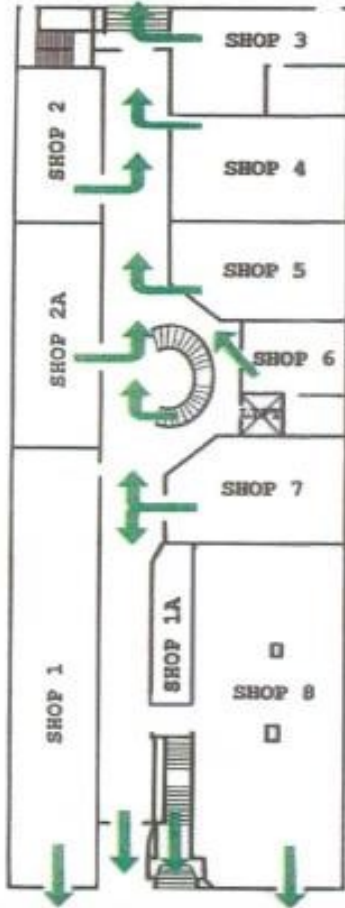


**BENCHMARK**  
COMMERCIAL

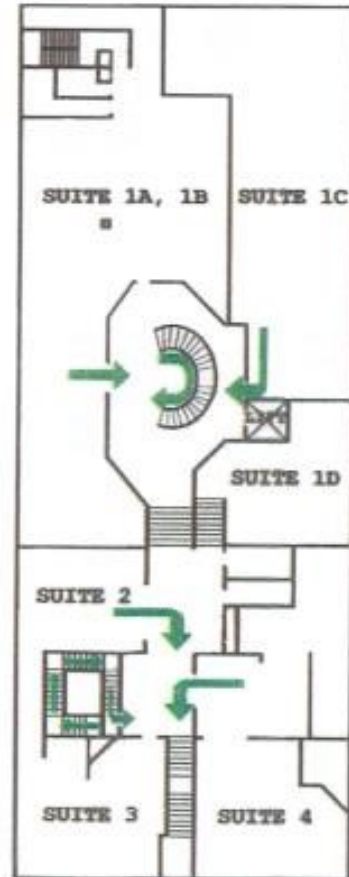
194B Lords Place, Orange NSW 2800

Telephone: (02) 63 62 5988  
Email: sales@bmpa.com.au  
Web: www.bmpa.com.au

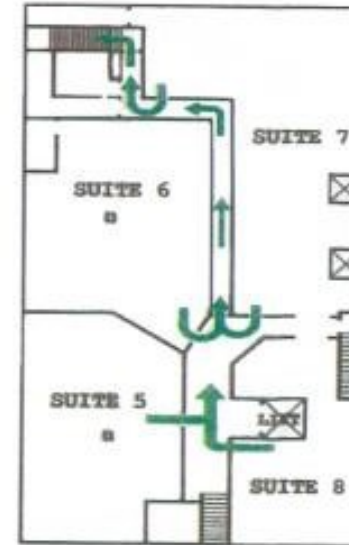
Ground Floor



Level 1



Level 2



Level 3

