

For Lease

Centrepont 226-232 Summer Street ORANGE

PRIME 'A' CLASS OFFICE ACCOMMODATION

Orange is the largest urban area in Central West New South Wales, population circa 40,000.

The diversified regional economy of Orange is centred on mining, health services and government administration.

Location

Situated in the heart of the CBD on the sunny side of the main retail strip between the Commonwealth Bank and Post Office.

Description

First floor suite of 38 sqm carpeted and air-conditioned office exuding superior quality prestige and presence but offered at bargain below shoptop rental.

Join highly successful long-term tenants including Just Jeans, Collins Books, Hairdresser, estate agent and NDIS offices.

Parking: Close to public car park

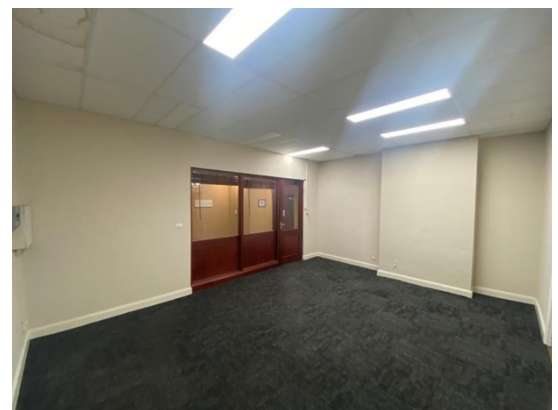
Zoning: E2 Commercial Centre

Tenancy	Area m ²	Rent (Ex GST)		Net/Gross
		\$pa	\$/m ²	
Level One Suite 2	38	\$12,600	\$332	Net

For more information please contact

Nigel Staniforth
0401 279 795

David Hall
0429 656 101

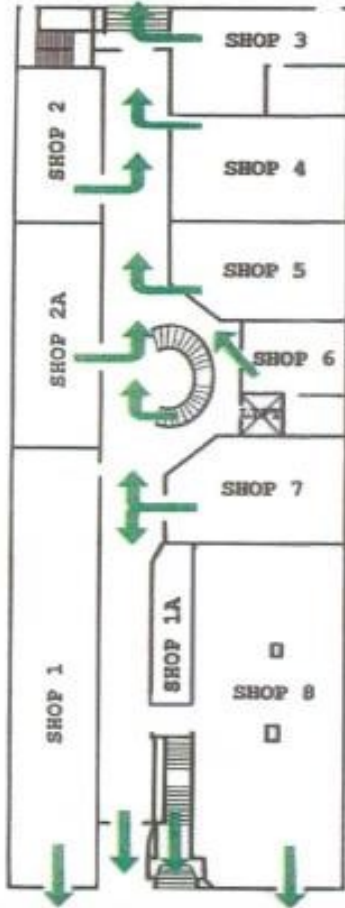


BENCHMARK
COMMERCIAL

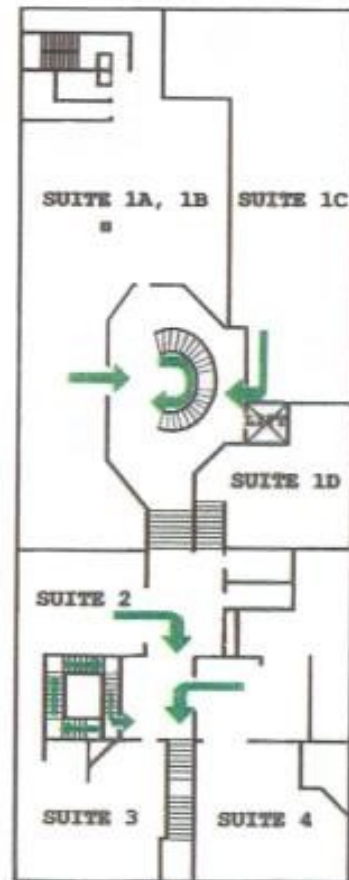
194B Lords Place, Orange NSW 2800

Telephone: (02) 63 62 5988
Email: sales@bmpa.com.au
Web: www.bmpa.com.au

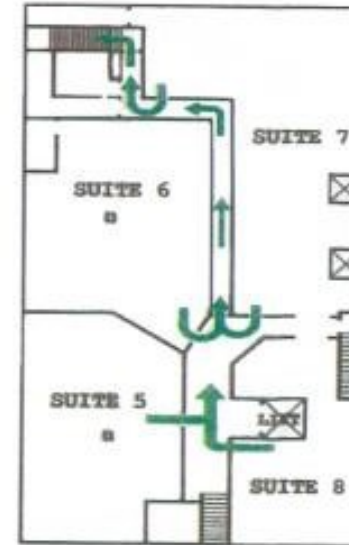
Ground Floor



Level 1



Level 2



Level 3

