

# For Lease

## Centrepont Arcade 226-232 Summer Street ORANGE

### CENTRAL CBD OFFICE SUITE

Orange is the largest urban area in Central West New South Wales, population circa 42,500.

The diversified regional economy of Orange is centred on mining, health services and government administration.

### Location

Situated in the heart of the CBD on the sunny side of the main retail strip between the Commonwealth Bank and Post Office.

### Description

Quality retail & office accommodation in landmark CBD building  
Beautifully renovated and maintained building  
Common areas include lift, modern amenities, daily cleaning and security patrols  
Small office suite  
Garbage charge & air-conditioning maintenance payable in addition to rent

Parking: Close to public car park

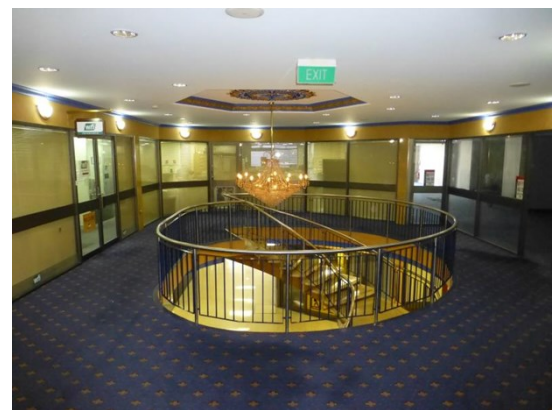
Zoning: B3 Commercial Core

Tenancy	Area m <sup>2</sup>	Rent (Ex GST)		Net/Gross
		\$pa	\$/week	
Level One Suite 2	38	\$12,600	\$254	Gross

### For more information please contact

Nigel Staniforth  
0401 279 795

David Hall  
0429 656 101



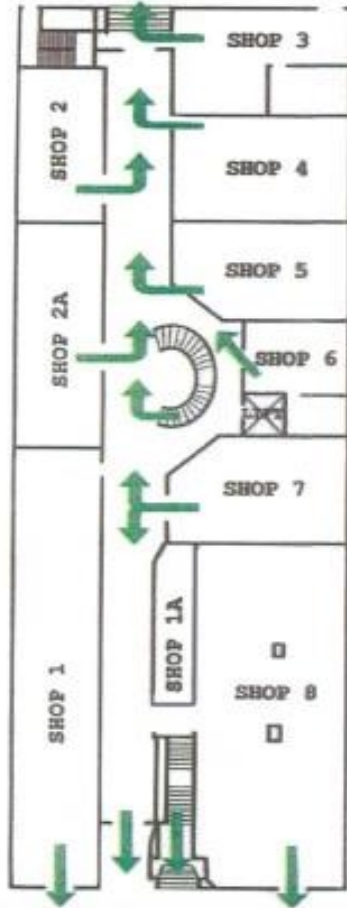
**BENCHMARK**  
COMMERCIAL

194B Lords Place, Orange NSW 2800

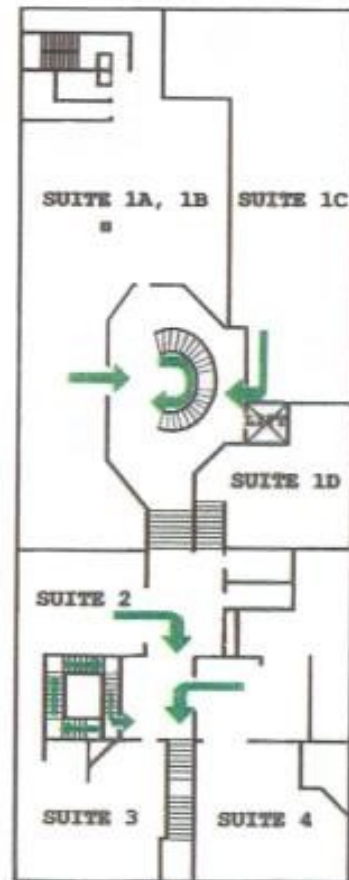
Telephone: (02) 63 62 5988  
Email: sales@bmpa.com.au  
Web: www.bmpa.com.au

ALL AREAS AND FIGURES APPROX. ONLY. All precaution has been taken to establish the accuracy of the information contained in this brochure. It does not, however, constitute any representation by the Vendor or Agent.

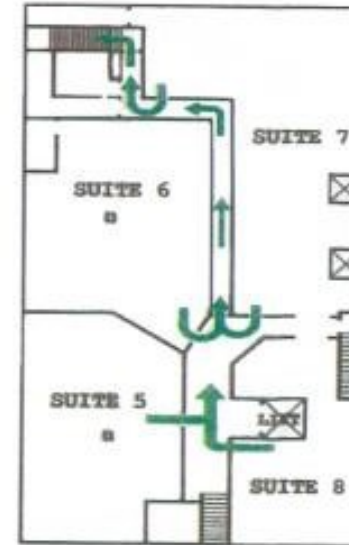
Ground Floor



Level 1



Level 2



Level 3

