

For Lease

24 Sale Street ORANGE

CENTRAL CBD OFFICES

Orange is the largest urban area in Central West New South Wales, population circa 42,500.

The diversified regional economy of Orange is centred on mining, health services and government administration.

Location

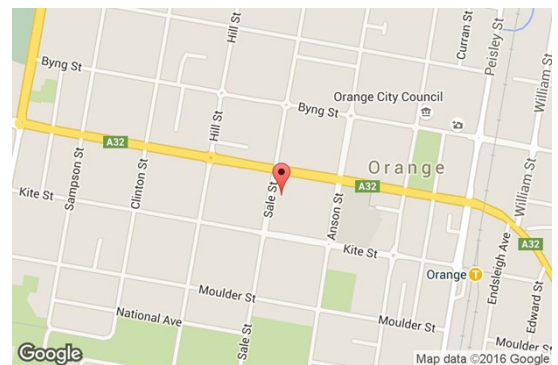
Situated on the Eastern side of Sale Street in the Orange CBD

Description

Modern office suite
Excellent location in heart of the CBD
Reverse cycle air-conditioning
Monitored security alarm system
Shared kitchenette and amenities

Parking: Onstreet

Zoning: B3 Commercial Core



Tenancy	Area m ²	Rent (Ex GST)		Net/Gross
		\$pa	\$/week	
Level One Suite 4	26	\$14,000	\$270	Gross

For more information please contact

Nigel Staniforth
0401 279 795

David Hall
0429 656 101

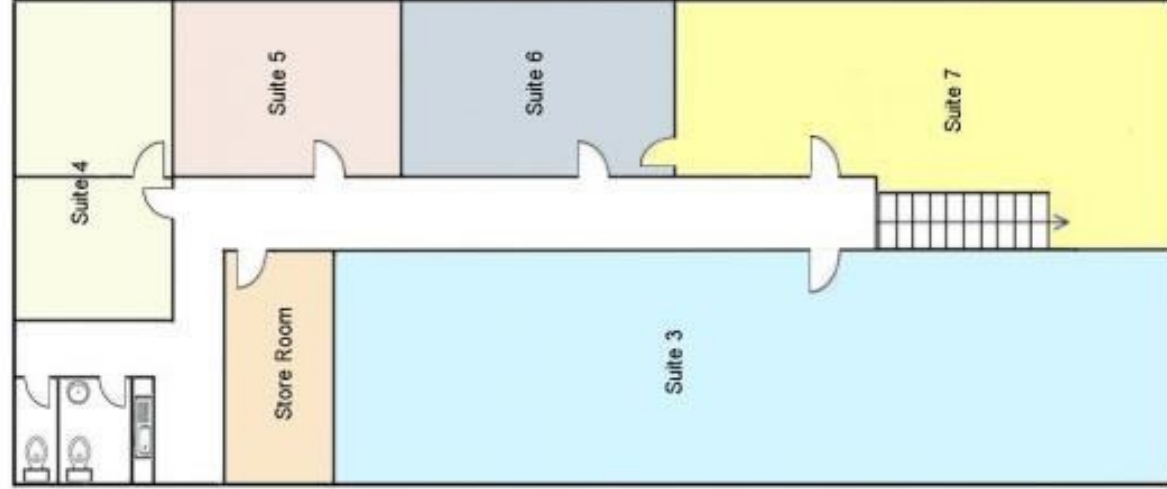


BENCHMARK
COMMERCIAL

194B Lords Place, Orange NSW 2800

Telephone: (02) 63 62 5988
Email: sales@bmpa.com.au
Web: www.bmpa.com.au

FIRST FLOOR
24 SALE STREET



← SALE STREET →