

For Lease

126-130 Kite Street ORANGE

PREMIUM OFFICE/MEDICAL SPACE

Orange is the largest urban area in Central West New South Wales, population circa 42,500.

The diversified regional economy of Orange is centred on mining, health services and government administration.

Location

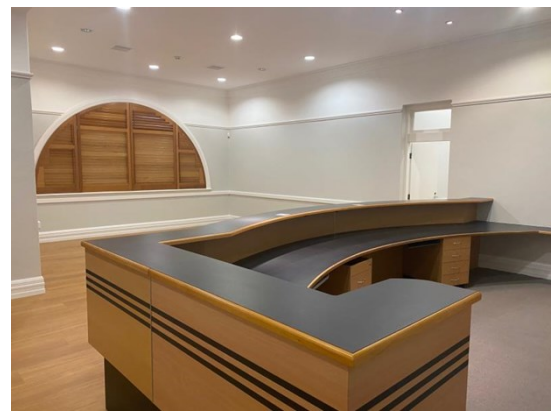
Located on the southern side of Kite Street, one block from the post office and Commonwealth Bank.

Description

Prominent period building one block from the main street
Fully renovated with very high quality fitout and finishes
Reverse cycle air-conditioning
Disabled access and amenities
14 offices/consulting rooms
Removable partitioning facilitates creation of large board room if required
Brick file storage shed
Meticulously maintained and presented

Amenities: Separate Male & Female
Ceiling: Plasterboard
Lighting: Mixed Configuration
Air Conditioning: Yes
Data Cabling: Yes
Alarm System: Yes

Parking: Up to 11 cars on-site
Zoning: B3 Commercial Core



Area m ²	Rent (Ex GST)		Net/Gross
	\$pa	\$/m ²	
360	\$125,000	\$347	Net

For more information please contact

David Hall
0429 656 101

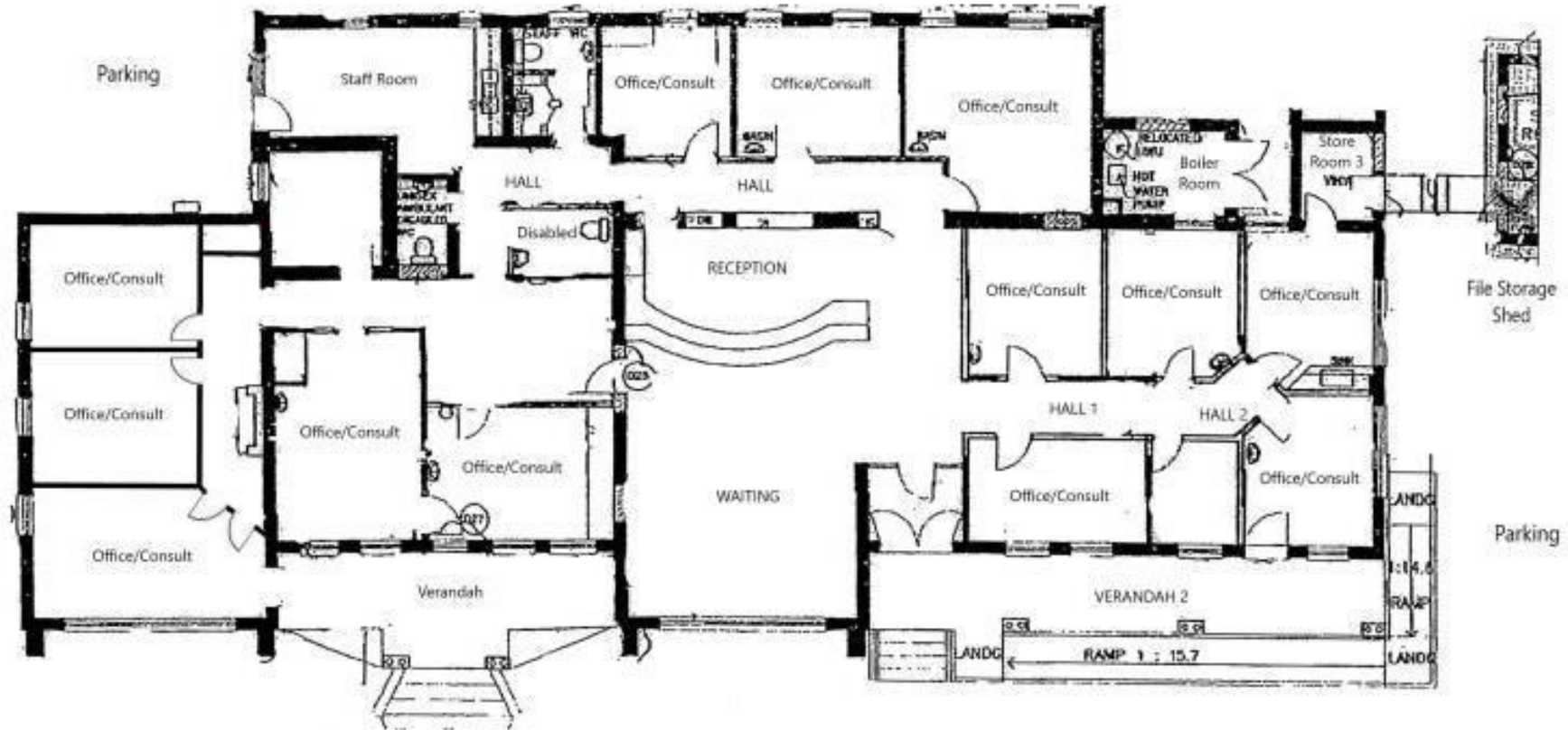
Nigel Staniforth
0401 279 795



BENCHMARK
COMMERCIAL

194B Lords Place, Orange NSW 2800

Telephone: (02) 63 62 5988
Email: sales@bmpa.com.au
Web: www.bmpa.com.au



————— KITE STREET —————