

# For Lease

## 182 Summer Street ORANGE

### PRIME RETAIL PROPERTY

Orange is the largest urban area in Central West New South Wales, population circa 42,500.

The diversified regional economy of Orange is centred on mining, health services and government administration.

### Location

Situated on the sunny side of Summer Street in the heart of the Orange CBD retail strip.

### Description

Prime location on tightly held retail strip  
High traffic flow sunny side of the street  
Good window frontage  
Frontage to Summer Street and Woolworths car park at rear  
Ground Floor approx. 250sqm + first floor storage (81sqm)

Retail Frontage: 7.614 metres  
Amenities: Unisex  
Ceiling: Grid  
Lighting: Mixed Configuration  
Air Conditioning: Yes

Parking: Public carpark adjoins at rear

Zoning: B3 Commercial Core

| Area<br>m <sup>2</sup> | Rent (Ex GST) |                   | Net/Gross |
|------------------------|---------------|-------------------|-----------|
|                        | \$pa          | \$/m <sup>2</sup> |           |
| 250                    | \$98,750      | \$395             | Net       |

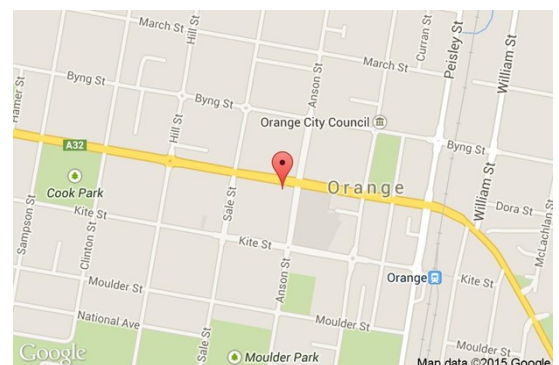
**For more information please contact**

**Nigel Staniforth**

0401 279 795

**David Hall**

0429 656 101

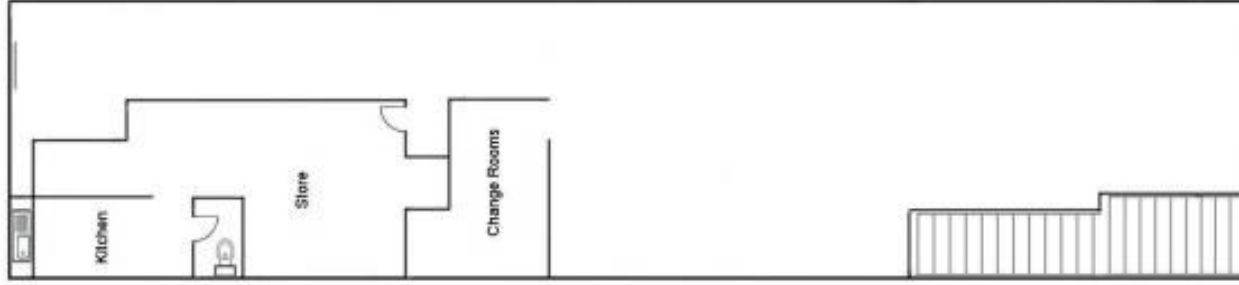


**BENCHMARK**  
COMMERCIAL

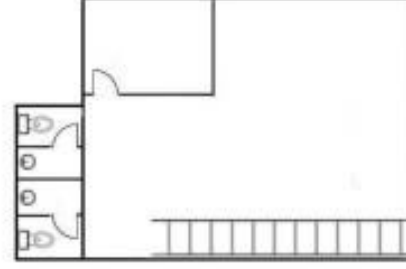
194B Lords Place, Orange NSW 2800

**Telephone:** (02) 6362 5988  
**Email:** sales@bmpa.com.au  
**Web:** www.bmpa.com.au

Woolworths Car Park



Ground Floor



First Floor

— SUMMER STREET —