

For Lease

200 Anson Street ORANGE

PRIME RETAIL TENANCY

Orange is the largest urban area in Central West New South Wales, population circa 42,500.

The diversified regional economy of Orange is centred on mining, health services and government administration.

Location

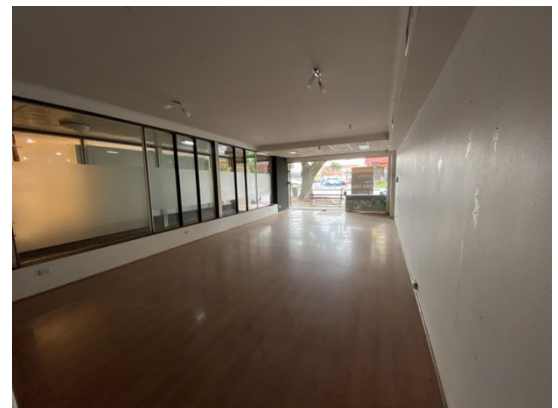
Located in the heart of the CBD opposite Woolworths and adjacent to the entrance to Orange City Centre

Description

Located in busy Anson Street retail strip
Prime retail building with modern glass shopfront
Shared amenities

Parking: 1 onsite

Zoning: B3 Commercial Core



Tenancy	Area m ²	Rent (Ex GST)		Net/Gross
		\$pa	\$/m ²	
Shop 3	59	\$36,993	\$627	Gross

For more information please contact

Nigel Staniforth
0401 279 795

David Hall
0429 656 101



BENCHMARK
COMMERCIAL

194B Lords Place, Orange NSW 2800
Telephone: (02) 63 62 5988
Email: sales@bmpa.com.au
Web: www.bmpa.com.au

