

For Lease

196 Lords Place ORANGE

MODERN OFFICE/MEDICAL SPACE IN THE CBD

Orange is the largest urban area in Central West New South Wales, population circa 42,500.

The diversified regional economy of Orange is centred on mining, health services and government administration.

Location

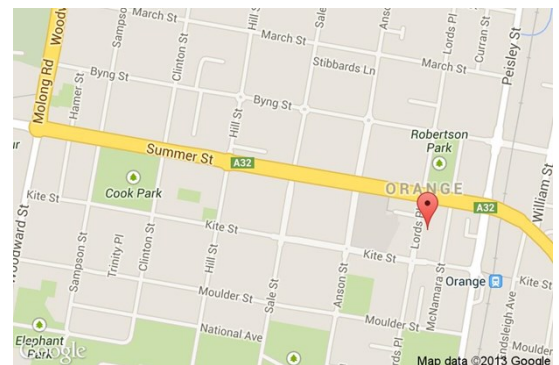
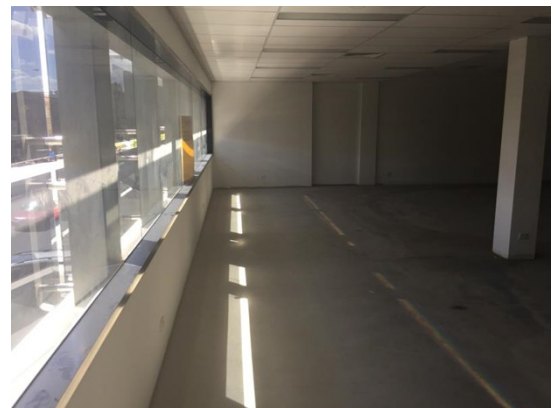
Situated in the heart of the Orange CBD with public car park adjoining at rear.

Description

Located in heart of CBD
Fully refurbished / as new premises
Walk through access to public car park at rear
Modern/new common areas and amenities
Lift access to first floor
Excellent natural light and insulated walls and ceilings
Join other allied health services which are already located within the building

Amenities: Separate Male & Female
Ceiling: Grid
Lighting: Fluorescent
Air Conditioning: Yes
Data Cabling: No
Alarm System: No

Parking: Public car park adjoins
Zoning: B3 Commercial Core



Area m ²	Rent (Ex GST)		Net/Gross
	\$pa	\$/m ²	
254	\$68,580	\$270	Net

For more information please contact

David Hall
0429 656 101

Nigel Staniforth
0401 279 795



BENCHMARK
COMMERCIAL

194B Lords Place, Orange NSW 2800

Telephone: (02) 63 62 5988
Email: sales@bmpa.com.au
Web: www.bmpa.com.au

