

# For Lease

161-165 Summer Street ORANGE

## CBD RETAIL OR COMMERCIAL PREMISES

Orange is the largest urban area in Central West New South Wales, population circa 42,500.

The diversified regional economy of Orange is centred on mining, health services and government administration.

### Location

Located on the northern side of Summer Street between Sale & Anson Street.

### Description

High profile position on the CBD retail strip  
Air-conditioned retail or commercial premises  
Retail area, store room & amenities  
Reverse cycle air-conditioning  
Available January 2021

Amenities: Unisex  
Ceiling: Plasterboard  
Lighting: Fluorescent  
Air Conditioning: Yes

Parking: Public car parks nearby

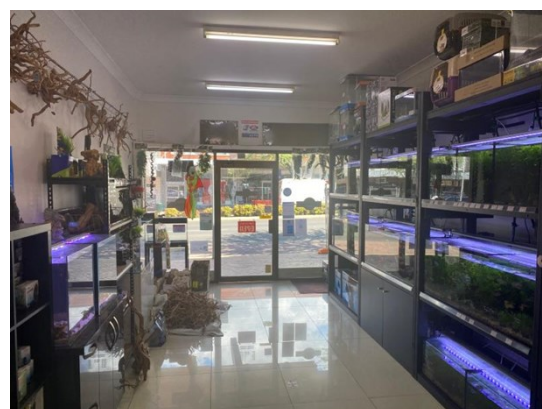
Zoning: B3 Commercial Core

Tenancy	Area m <sup>2</sup>	Rent (Ex GST)			Net/Gross
		\$pa	\$/m <sup>2</sup>	\$/week	
No. 161	73	\$27,500	\$377	\$529	Gross

### For more information please contact

David Hall  
0429 656 101

Nigel Staniforth  
0401 279 795



**BENCHMARK**  
COMMERCIAL

194B Lords Place, Orange NSW 2800  
Telephone: (02) 63 62 5988  
Email: sales@bmpa.com.au  
Web: www.bmpa.com.au



SUMMER STREET