

# For Lease

25 Sale Street ORANGE

## HIGH PROFILE OFFICE SPACE

Orange is the largest urban area in Central West New South Wales, population circa 42,500.

The diversified regional economy of Orange is centred on mining, health services and government administration.

## Location

Located western side of Sale Street, 160m south of Summer Street

## Description

Two storey office complex  
Newly painted & carpeted commercial space  
External additional storage available  
Close to the heart of the CBD  
Onsite car parking

Parking: 1 onsite

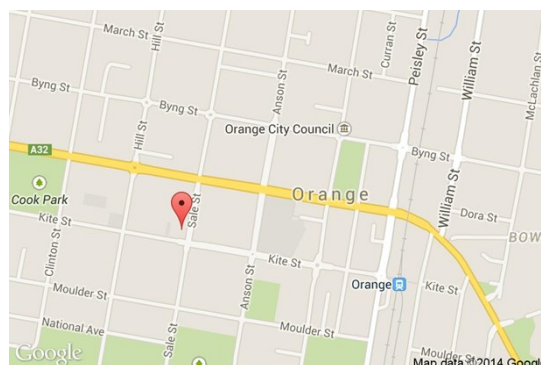
Zoning: B3 Commercial Core

| Tenancy            | Area<br>m <sup>2</sup> | Rent (Ex GST) |         | Net/Gross |
|--------------------|------------------------|---------------|---------|-----------|
|                    |                        | \$pa          | \$/week |           |
| Level 1 Suite<br>6 | 16                     | \$9,880       | \$200   | Gross     |

## For more information please contact

Nigel Staniforth  
0401 279 795

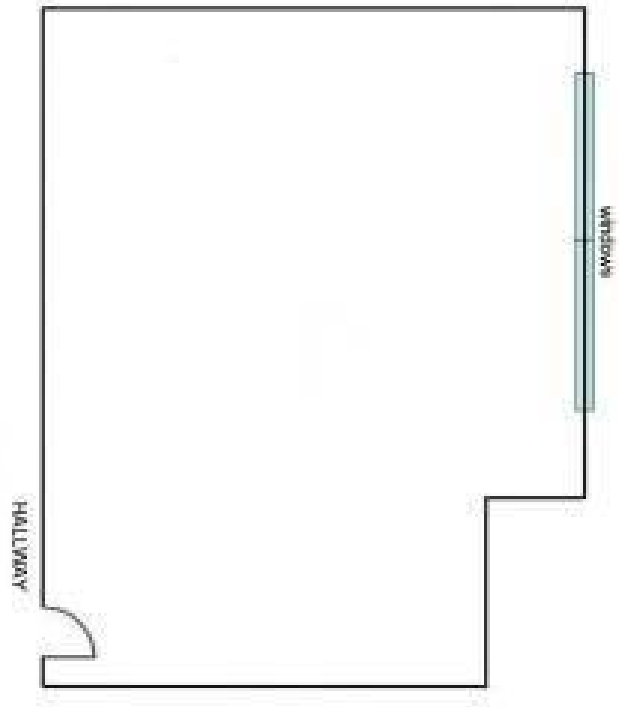
David Hall  
0429 656 101



**BENCHMARK**  
COMMERCIAL

194B Lords Place, Orange NSW 2800

Telephone: (02) 63 62 5988  
Email: sales@bmpa.com.au  
Web: www.bmpa.com.au



**SUITE 8**