

For Lease

171 Lords Place ORANGE

PROMINENT CBD CORNER

Orange is the largest urban area in Central West New South Wales, population circa 40,000.

The diversified regional economy of Orange is centred on mining, health services and government administration.

Location

Situated on the North Western corner of Lords Place and Kite Street in the heart of the Orange CBD

Description

High exposure corner position in heart of the CBD
Exceptional natural light with floor to ceiling windows to each street frontage

Glazed office & training room within tenancy

Ducted reverse cycle air-conditioning

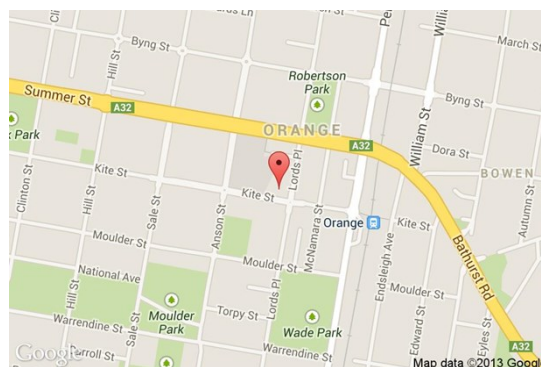
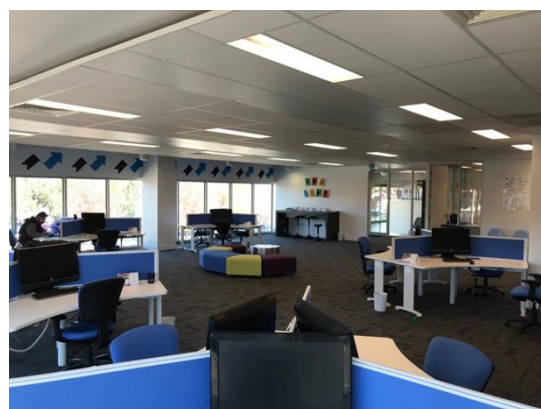
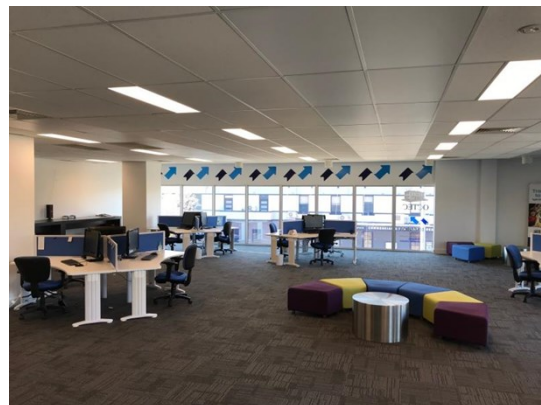
Lift access to first floor

Secure on-site car parking spaces

Amenities: Shared
Ceiling: Grid
Lighting: Fluorescent
Air Conditioning: Yes
Data Cabling: Yes
Security System: No

Parking: 2 undercover secure car parks

Zoning: B3 Commercial Core



Tenancy	Area m ²	Rent (Ex GST)		Net/Gross
		\$pa	\$/m ²	
Level 1 Suite 4	230	\$77,050	\$335	Gross

For more information please contact

Nigel Staniforth
0401 279 795

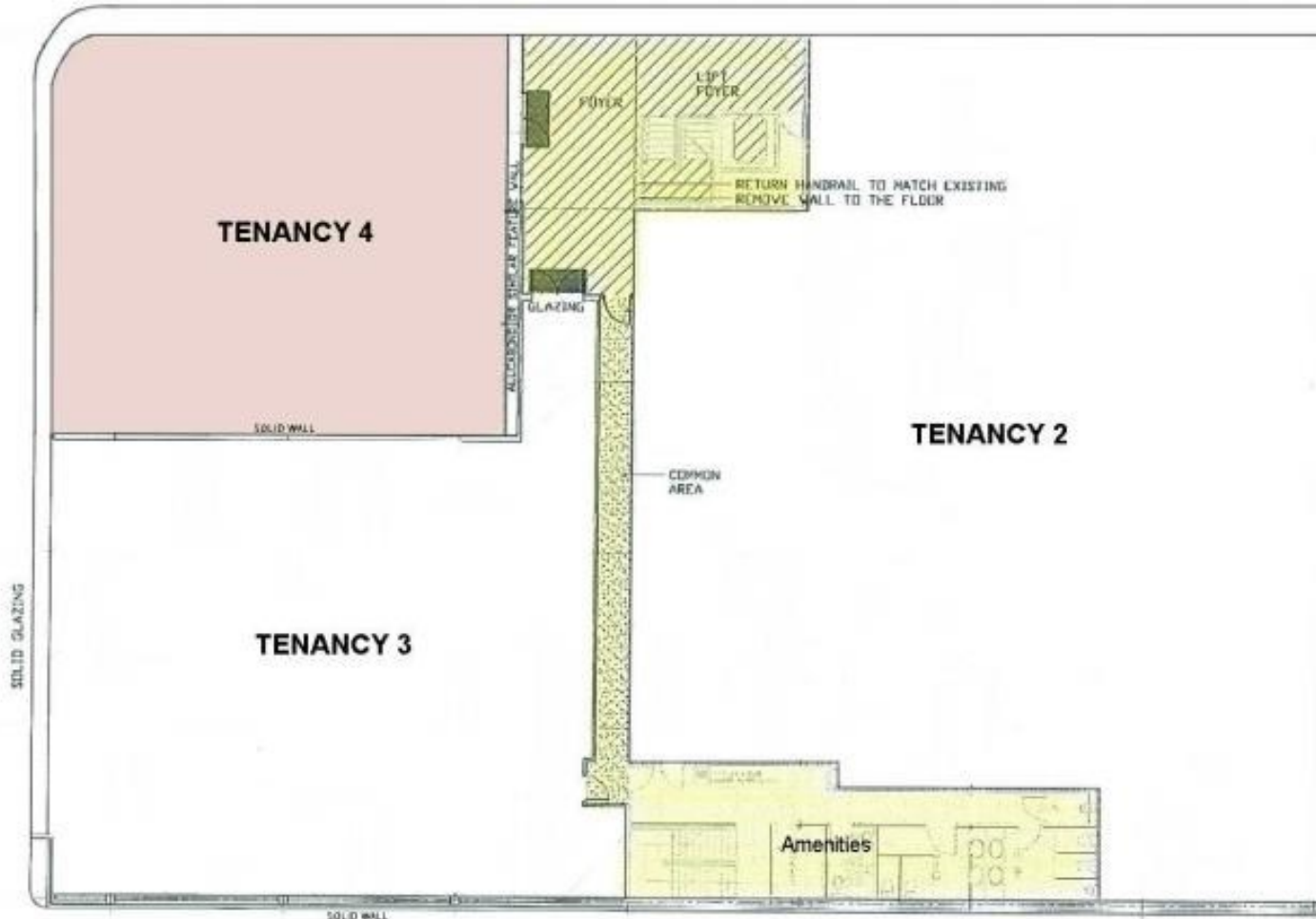
David Hall
0429 656 101



BENCHMARK
COMMERCIAL

194B Lords Place, Orange NSW 2800

Telephone: (02) 63 62 5988
Email: sales@bmpa.com.au
Web: www.bmpa.com.au



NOTE:
COM'S RACK BY TENANT