

# For Lease

## 149-153 Summer Street ORANGE

### WAREHOUSE BUSINESS PREMISES IN THE CBD

Orange is the largest urban area in Central West New South Wales, population circa 42,500.

The diversified regional economy of Orange is centred on mining, health services and government administration.

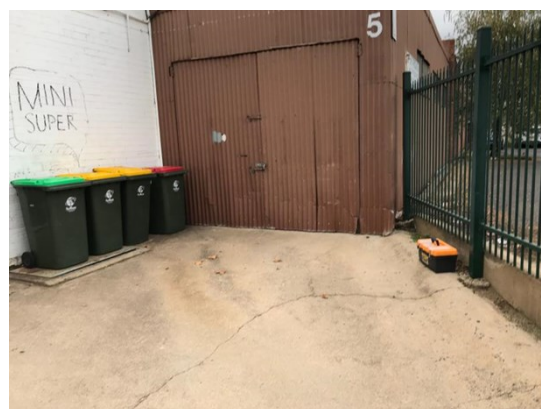
### Location

Located on the northern side of Summer Street in the Orange CBD retail strip

### Description

Rear warehouse with good driveway access  
Brick building with two access points  
Suit storage, gym or retail/service trades business (subject to DA)

Warehouse Lighting: Mixed Configuration  
Roller Door Height: 3.50 metres  
Parking: Onstreet  
3 Phase Electricity Supply: No  
Secure Yard: No



Factory W'hse m <sup>2</sup>	Office Amenities m <sup>2</sup>	Other m <sup>2</sup>	Total Bldg m <sup>2</sup>	Rent (Ex GST) \$pa	\$/m <sup>2</sup>	Net/Gross
493			493	\$39,440	\$80	Gross

### Site Details

**Land Area:** 1,675 sqm  
**Zoning:** B3 Commercial Core

### For more information please contact

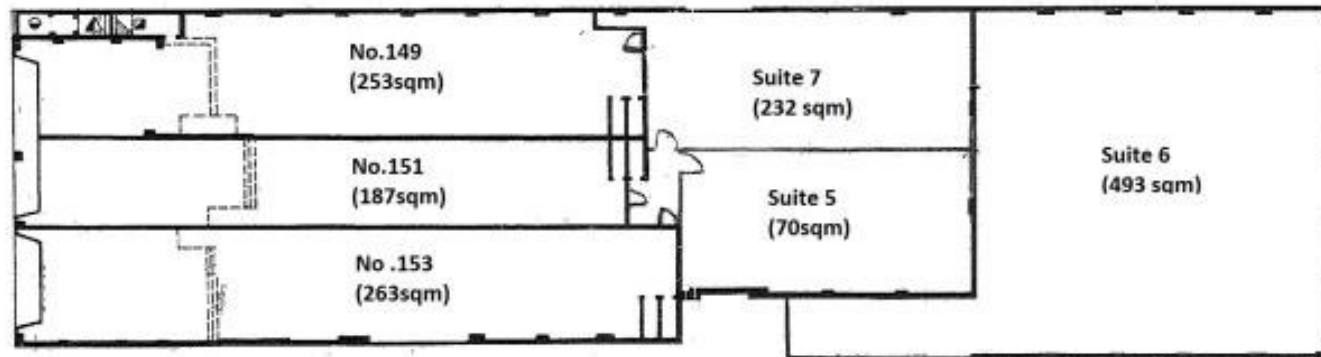
Nigel Staniforth                      David Hall  
0401 279 795                              0429 656 101



194B Lords Place, Orange NSW 2800  
Telephone: (02) 6362 5988  
Email: sales@bmpa.com.au  
Web: www.bmpa.com.au



First Floor, Suite 4 (194sqm)



Ground Floor

Measurements are approx.