

For Lease

149-153 Summer Street ORANGE

PRIME LOCATION IN SUMMER STREET

Orange is the largest urban area in Central West New South Wales, population circa 42,500.

The diversified regional economy of Orange is centred on mining, health services and government administration.

Location

Located on the northern side of Summer Street in the Orange CBD retail strip

Description

Outstanding location in the heart of the Orange CBD
Located between the busy Anson/Sale Street precinct
Large retail space on Summer Street
5.8 metre street frontage (approx)
Rear storeroom/warehouse also available by negotiation

Parking: Onstreet

Zoning: B3 Commercial Core



Tenancy	Area m ²	Rent (Ex GST)		Net/Gross
		\$pa	\$/m ²	
No. 149	253	\$63,250	\$250	Gross

For more information please contact

Nigel Staniforth
0401 279 795

David Hall
0429 656 101

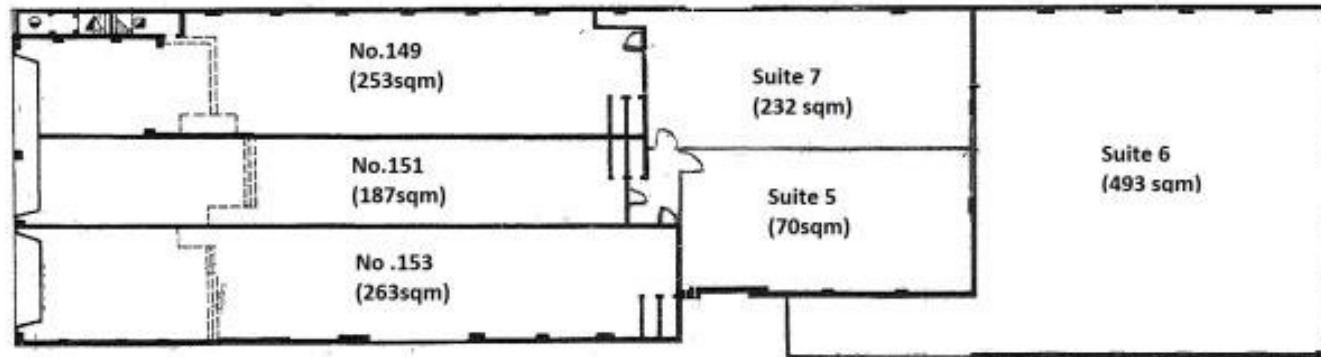


BENCHMARK
COMMERCIAL

194B Lords Place, Orange NSW 2800
Telephone: (02) 63 62 5988
Email: sales@bmpa.com.au
Web: www.bmpa.com.au



First Floor, Suite 4 (194sqm)



Ground Floor

Measurements are approx.