

For Lease

153-157 Peisley Street ORANGE

CBD RETAIL/SERVICE PREMISES

Orange is the largest urban area in Central West New South Wales, population circa 42,500.

The diversified regional economy of Orange is centred on mining, health services and government administration.

Location

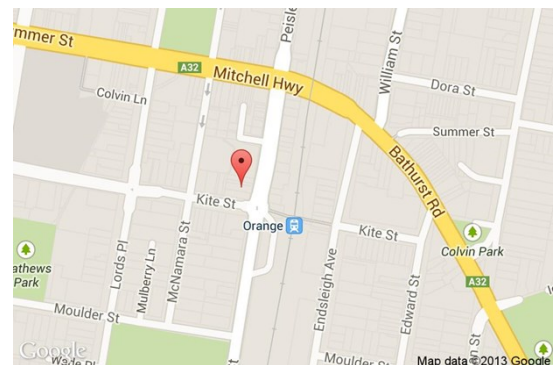
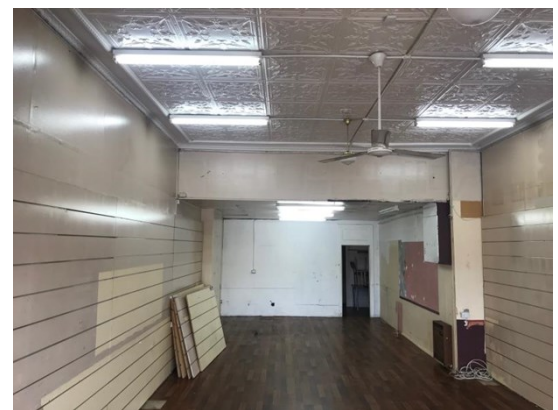
Located within the CBD on the west side of busy Peisley Street.

Description

Good window frontage onto busy Peisley Street
Good shape tenancy
Clear open retail/service space
Internal amenities

Parking: Onstreet parking

Zoning: B3 Commercial Core



Tenancy	Area m ²	Rent (Ex GST)		Net/Gross
		\$pa	\$/m ²	
Suite 2	80	\$20,800	\$260	Gross

For more information please contact

Nigel Staniforth
0401 279 795

David Hall
0429 656 101



BENCHMARK
COMMERCIAL

194B Lords Place, Orange NSW 2800
Telephone: (02) 63 62 5988
Email: sales@bmpa.com.au
Web: www.bmpa.com.au

