

For Sale

13-15 Peisley Street & 24-28 Lords Place ORANGE

LARGE INDUSTRIAL COMPLEX

Orange is the largest urban area in Central West New South Wales, population circa 42,500.

The diversified regional economy of Orange is centred on mining, health services and government administration.

Location

Located approximately 1.5 kilometres south of Orange CBD in the Peisley Street service trades precinct.

Description

Excellent high exposure position
Large versatile site with dual street frontages
Part modern tilt concrete panel buildings & part brick & masonry block
6 gantry cranes (5 tonne & 1 tonne)
Concrete & gravel hardstand yard
Further development potential on surplus land
For sale as a whole or in two parts

Warehouse Lighting: High Bay LED
Roller Door Height: 5 metres
Parking: Ample on-site parking
3 Phase Electricity: Yes
Secure Yard: Yes

Factory W'hse m ²	Office & Amenities m ²	Other m ²	Total m ²
3,285	365		3,650

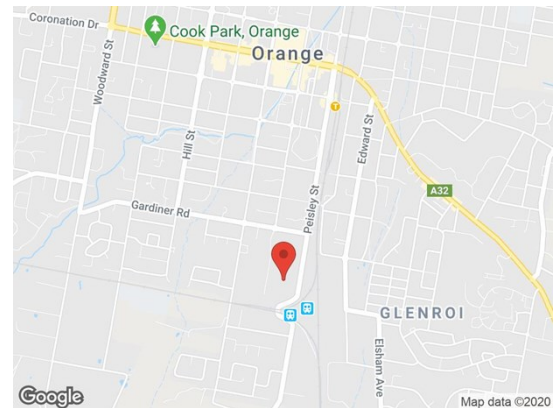
Site Details

Title: Freehold Title
Tenure: Available with vacant possession
Land Area: 10,701 sqm
Zoning: IN1 General Industrial
Price: \$4,500,000 + GST

For more information please contact

David Hall
0429 656 101

Nigel Staniforth
0401 279 795



BENCHMARK
COMMERCIAL

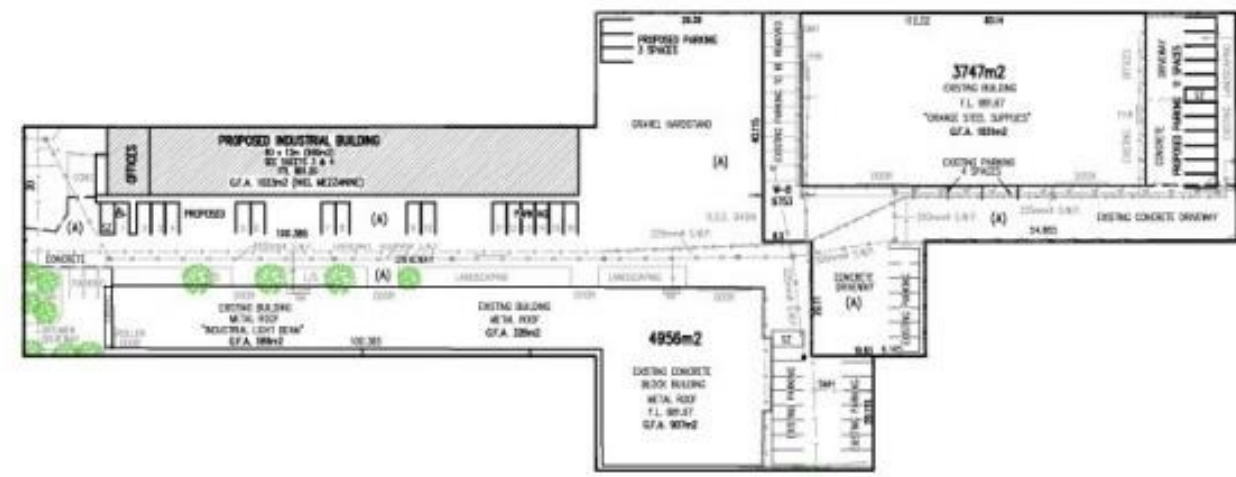
194B Lords Place, Orange NSW 2800

Telephone: (02) 63 62 5988

Email: sales@bmpa.com.au

Web: www.bmpa.com.au

LORDS PLACE



PEISLEY STREET