

For Sale

24-28 Lords Place ORANGE

INDUSTRIAL FACILITY WITH CRANES

Orange is the largest urban area in Central West New South Wales, population circa 42,500.

The diversified regional economy of Orange is centred on mining, health services and government administration.

Location

Located approximately 1.5 kilometres south of Orange CBD in the Lords Place industrial precinct.

Description

Part modern tilt concrete panel building with 5 tonne Eilbeck gantry crane
Part brick warehouse/factory with 3 x 1 tonne gantry cranes
Refurbished air-conditioned offices and amenities
Extensive concrete & gravel hardstand yard
Drive through/Right of Way to Peisley Street
Surplus land with further development potential
Adjoining 13-15 Peisley Street also for sale or lease

Warehouse Lighting: High Bay LED
Roller Door Height: 5 metres
Parking: Ample on-site parking
3 Phase Electricity: Yes
Secure Yard: Yes

Factory W'hse m ²	Office & Amenities m ²	Other m ²	Total m ²
1,637	182		1,819

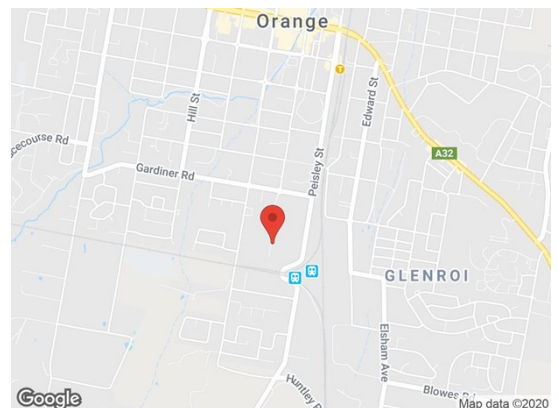
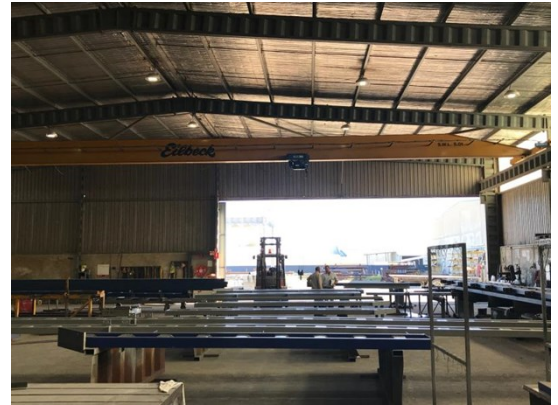
Site Details

Title: Freehold Title
Tenure: Available with vacant possession
Land Area: 6,963 sqm
Zoning: IN1 General Industrial
Price: \$2,200,000 + GST

For more information please contact

David Hall
0429 656 101

Nigel Staniforth
0401 279 795



BENCHMARK
COMMERCIAL

194B Lords Place, Orange NSW 2800
Telephone: (02) 63 62 5988
Email: sales@bmpa.com.au
Web: www.bmpa.com.au

ALL AREAS AND FIGURES APPROX. ONLY. All precaution has been taken to establish the accuracy of the information contained in this brochure. It does not, however, constitute any representation by the Vendor or Agent.

