

# For Lease

123-125 Peisley Street ORANGE

## BUSY PEISLEY STREET POSITION

Orange is the largest urban area in Central West New South Wales, population circa 42,500.

The diversified regional economy of Orange is centred on mining, health services and government administration.

## Location

Situated approximately 350 metres north-east of the Orange Post Office on the western side of Peisley Street, opposite the Orange Railway Station.

## Description

Excellent position on busy Peisley Street  
Rear access/frontage to McNamara Lane  
Huge fully concreted CBD site  
Air-conditioned offices/showroom plus warehousing  
Zoned B3 Commercial Core  
Rare fringe CBD service trades property

Warehouse Lighting: Mixed Configuration  
Roller Door Height: 4.80 metres  
Parking: Ample on-site parking  
3 Phase Electricity Supply: Yes  
Secure Yard: Yes

| Factory W'hse m <sup>2</sup> | Office Amenities m <sup>2</sup> | Other m <sup>2</sup> | Total Bldg m <sup>2</sup> | Rent (Ex GST) \$pa | \$/m <sup>2</sup> | Net/ Gross |
|------------------------------|---------------------------------|----------------------|---------------------------|--------------------|-------------------|------------|
| 708                          | 508                             |                      | 1,216                     | \$160,000          | \$132             | Gross      |

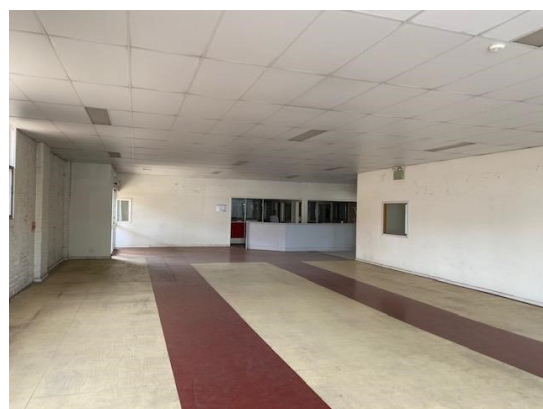
## Site Details

**Land Area:** 3,254 sqm  
**Zoning:** B3 Commercial Core

### For more information please contact

David Hall  
0429 656 101

Nigel Staniforth  
0401 279 795



**BENCHMARK**  
COMMERCIAL

194B Lords Place, Orange NSW 2800  
Telephone: (02) 6362 5988  
Email: sales@bmpa.com.au  
Web: www.bmpa.com.au

