

# For Lease

119 Byng Street ORANGE

## CENTRAL OFFICES WITH ON-SITE PARKING

Orange is the largest urban area in Central West New South Wales, population circa 42,500.

The diversified regional economy of Orange is centred on mining, health services and government administration.

## Location

Situated in the courthouse precinct of the Orange CBD some 270 meters north of the Orange Post Office.

## Description

Excellent location in Court House precinct of CBD  
Free standing brick building with on-site parking including lock up garage and carport  
Accommodation includes reception, 4 offices, meeting room, kitchen & separate male and female amenities  
Ducted reverse cycle air-conditioning and alarm system.

Amenities: Separate Male & Female  
Ceiling: Plasterboard  
Lighting: Mixed Configuration  
Air Conditioning: Yes  
Data Cabling: Yes  
Alarm System: Yes

Parking: 6 car spaces on-site  
Zoning: B4 Mixed Use



Area m <sup>2</sup>	Rent (Ex GST)		Net/Gross
	\$pa	\$/m <sup>2</sup>	
129	\$48,200	\$374	Gross

For more information please contact

**David Hall**  
0429 656 101

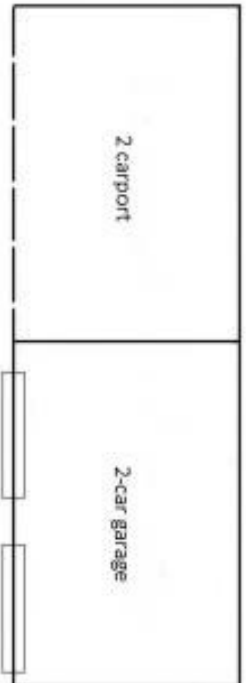
**Nigel Staniforth**  
0401 279 795



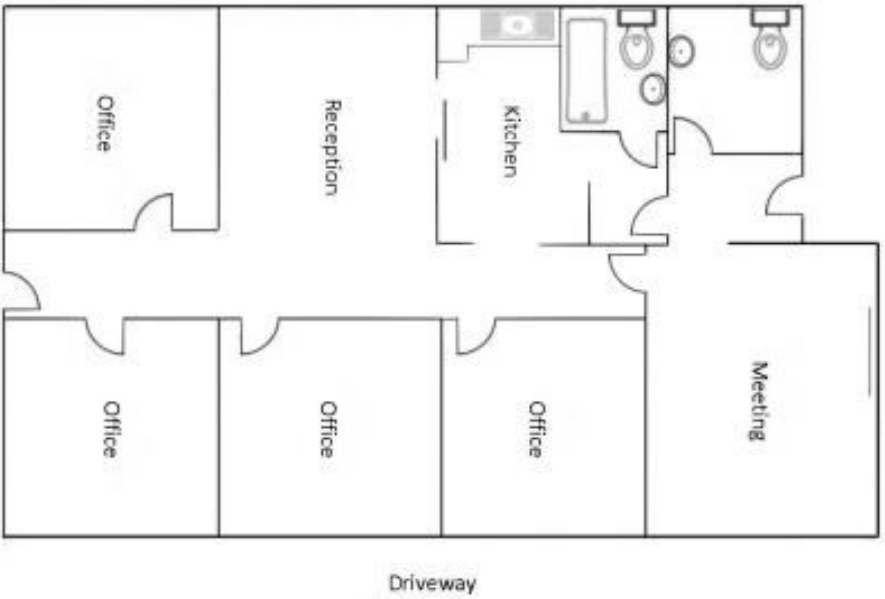
**BENCHMARK**  
COMMERCIAL

194B Lords Place, Orange NSW 2800

**Telephone:** (02) 63 62 5988  
**Email:** sales@bmpa.com.au  
**Web:** www.bmpa.com.au



Concrete Hardstand



BYNG STREET