

# For Sale

47-49 Hill Street ORANGE

## NEWSTEAD - LANDMARK PROPERTY

Orange is the largest urban area in Central West New South Wales, population circa 42,500.

The diversified regional economy of Orange is centred on mining, health services and government administration.

## Location

Located on the north-western corner of Kite Street and Hill Street on the western edge of the Orange CBD, approximately 650 metres south-west of the Orange Post Office.

## Description

Newstead is an historic Orange landmark property. Excellent location in the CBD & close to Cook Park. Circa 1890 Victorian architecture. Large corner block with mature ornamental trees & gardens B4 Mixed Use zone facilitates many potential uses for the property (STCA)

The sale of Newstead represents a once-in-a-lifetime opportunity to acquire an historic landmark property in the thriving regional centre of Orange.

## Site Details

<b>Title:</b>	Freehold Title
<b>Land Area:</b>	3,526 m <sup>2</sup>
<b>Building Area:</b>	613.70 m <sup>2</sup>
<b>Zoning:</b>	B4 Mixed Use
<b>Price:</b>	\$1,750,000 + GST

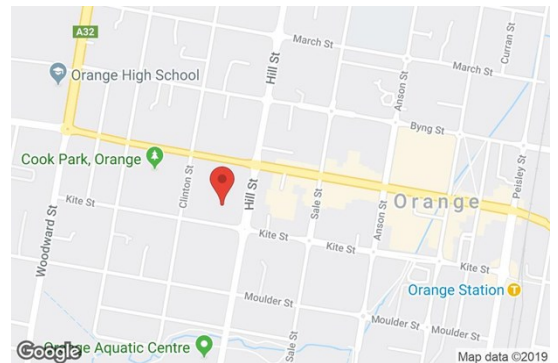
**For more information please contact**

**Nigel Staniforth**

0401 279 795

**David Hall**

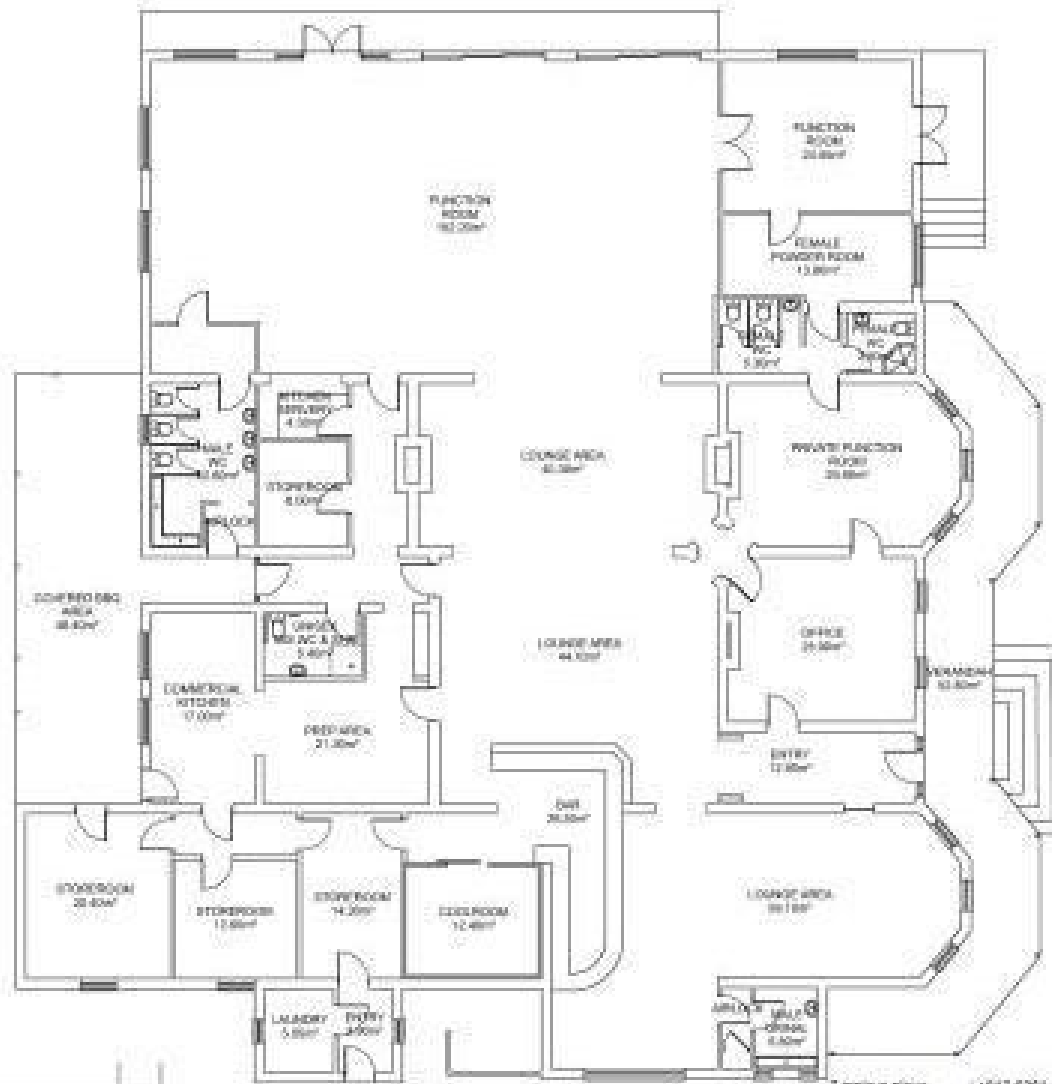
0429 656 101



**BENCHMARK**  
COMMERCIAL

194B Lords Place, Orange NSW 2800

**Telephone:** (02) 63 62 5988  
**Email:** sales@bmpa.com.au  
**Web:** www.bmpa.com.au



**EXISTING FLOOR PLAN**

1:125

