

# For Lease

## 127 Byng Street ORANGE

### CBD OFFICE WITH GOOD PARKING

Orange is the largest urban area in Central West New South Wales, population circa 42,500.

The diversified regional economy of Orange is centred on mining, health services and government administration.

### Location

Excellent location on the Northern side of Byng Street in the Court House precinct of the Orange CBD

### Description

Prime location opposite courthouse and close to Council Chambers/Orange Civic Centre  
Detached two level commercial office building  
Excellent existing fitout  
11 onsite car parks (2 lock up)  
Whole building available for lease or choice of ground or first floor

Parking: 11 on-site parking spaces

Zoning: B4 Mixed Use

Tenancy	Area m <sup>2</sup>	Rent (Ex GST)		Net/Gross
		\$pa	\$/m <sup>2</sup>	
Level 1	295	\$73,750	\$250	Net

### For more information please contact

David Hall  
0429 656 101

Nigel Staniforth  
0401 279 795



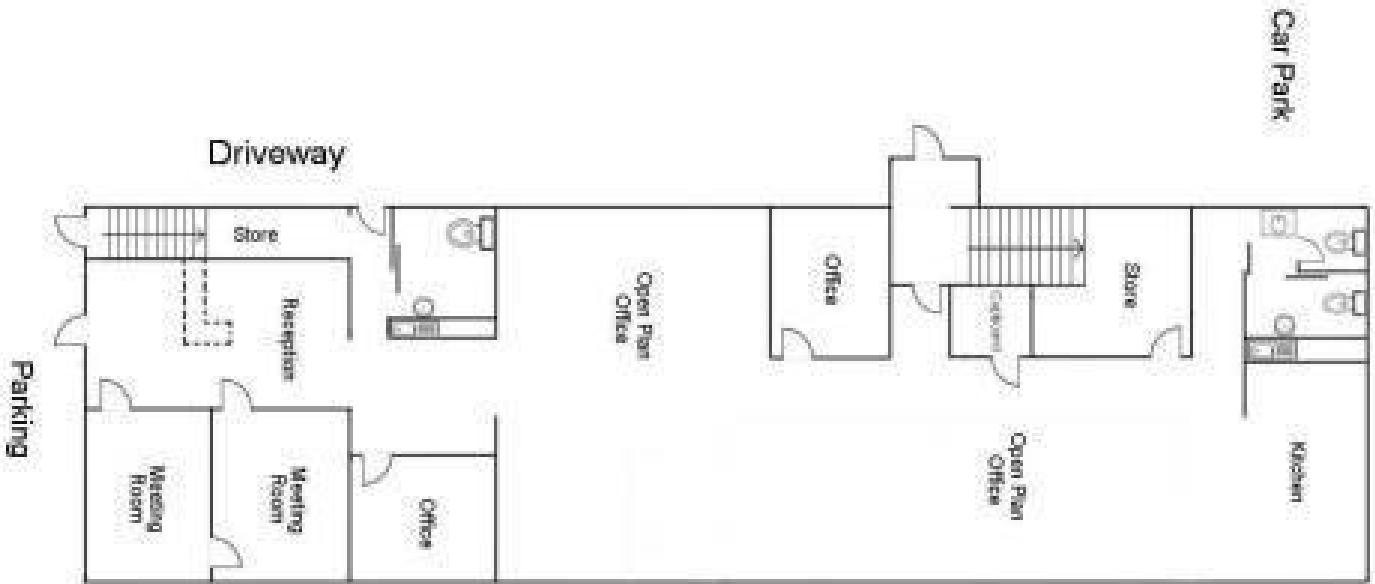
## BENCHMARK COMMERCIAL

194B Lords Place, Orange NSW 2800

Telephone: (02) 63 62 5988  
Email: sales@bmpa.com.au  
Web: www.bmpa.com.au

ALL AREAS AND FIGURES APPROX. ONLY. All precaution has been taken to establish the accuracy of the information contained in this brochure. It does not, however, constitute any representation by the Vendor or Agent.

GROUND FLOOR



↔ BYWIG STREET ↔

FIRST FLOOR

