

For Lease

Centrepont Arcade 226-232 Summer Street ORANGE

CENTRAL CBD RETAIL & OFFICE SUITES

Orange is the largest urban area in Central West New South Wales, population circa 40,000.

The diversified regional economy of Orange is centred on mining, health services and government administration.

Location

Situated in the heart of the CBD on the sunny side of the main retail strip between the Commonwealth Bank and Post Office.

Description

Quality retail & office accommodation in landmark CBD building
Air-conditioned shops/suites from 16 sqm to 290 sqm
Beautifully renovated and maintained building
Common areas include lift, modern amenities, daily cleaning and security patrols
Competitive rental rates & flexible lease terms
Garbage charge & air-conditioning maintenance payable in addition to rent

Amenities: Shared
Ceiling: Mixed Construction
Lighting: Mixed Configuration
Air Conditioning: Yes

Parking: Close to public car park

Zoning: B3 Commercial Core

Tenancy	Area m ²	Rent (Ex GST)			Net/Gross
		\$pa	\$/m ²	\$/week	
Ground Floor Shop 2	46	\$18,200	\$398	\$350	Gross

For more information please contact

Nigel Staniforth 0401 279 795
David Hall 0429 656 101

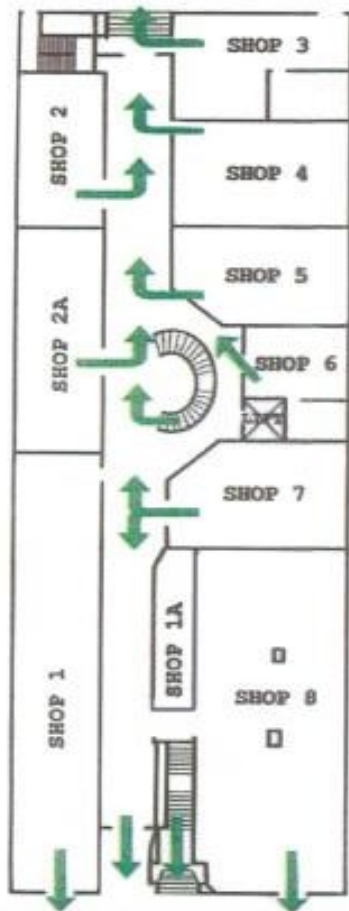


BENCHMARK
COMMERCIAL

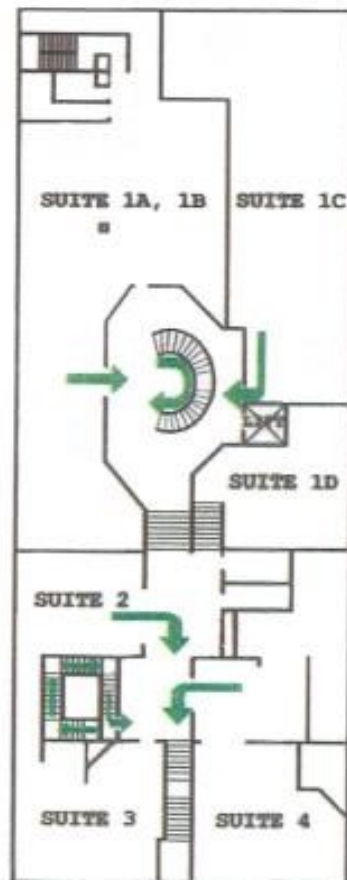
194B Lords Place, Orange NSW 2800

Telephone: (02) 63 62 5988
Email: sales@bmpa.com.au
Web: www.bmpa.com.au

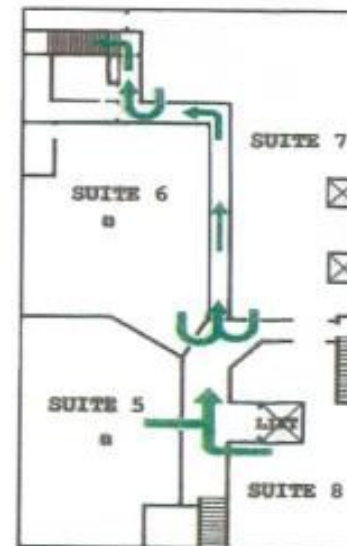
Ground Floor



Level 1



Level 2



Level 3

