

For Lease

Centrepont Arcade 226-232 Summer Street ORANGE

CENTRAL CBD RETAIL & OFFICE SUITES

Orange is the largest urban area in Central West New South Wales, population circa 40,000.

The diversified regional economy of Orange is centred on mining, health services and government administration.

Location

Situated in the heart of the CBD on the sunny side of the main retail strip between the Commonwealth Bank and Post Office.

Description

Quality retail & office accommodation in landmark CBD building
Air-conditioned shops/suites from 16 sqm to 290 sqm
Beautifully renovated and maintained building
Common areas include lift, modern amenities, daily cleaning and security patrols
Competitive rental rates & flexible lease terms
Garbage charge & air-conditioning maintenance payable in addition to rent

Amenities: Shared
Ceiling: Mixed Construction
Lighting: Mixed Configuration
Air Conditioning: Yes

Parking: Close to public car park

Zoning: B3 Commercial Core



Tenancy	Area m ²	Rent (Ex GST)			Net/Gross
		\$pa	\$/m ²	\$/week	
Ground Floor Shop 2	46	\$18,200	\$398		Gross

For more information please contact

Nigel Staniforth David Hall
0401 279 795 0429 656 101



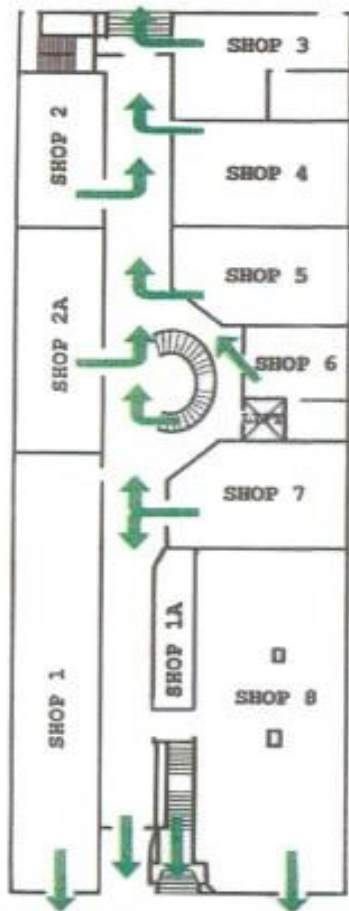
BENCHMARK
COMMERCIAL

194B Lords Place, Orange NSW 2800

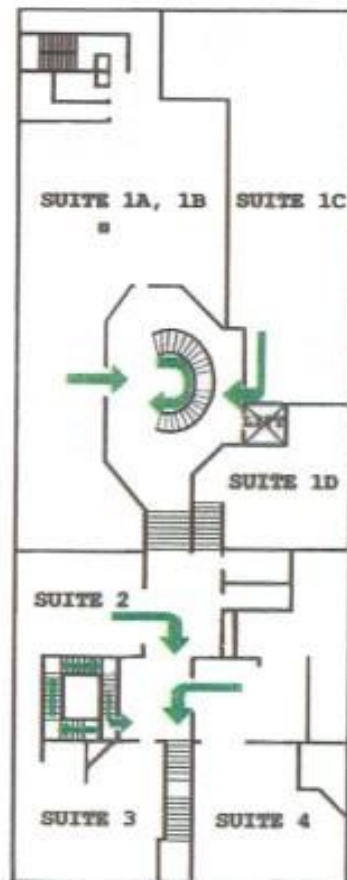
Telephone: (02) 63 62 5988
Email: sales@bmpa.com.au
Web: www.bmpa.com.au

ALL AREAS AND FIGURES APPROX. ONLY. All precaution has been taken to establish the accuracy of the information contained in this brochure. It does not, however, constitute any representation by the Vendor or Agent.

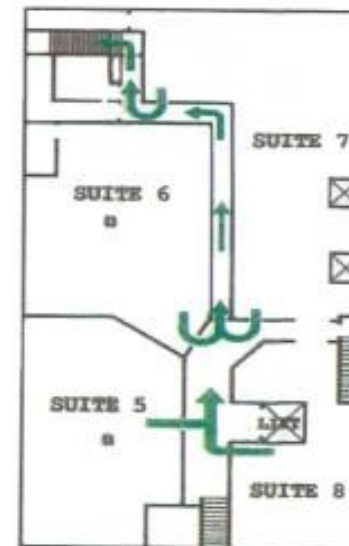
Ground Floor



Level 1



Level 2



Level 3

