

For Lease

127 Byng Street ORANGE

CBD OFFICE WITH GOOD PARKING

Orange is the largest urban area in Central West New South Wales, population circa 40,000.

The diversified regional economy of Orange is centred on mining, health services and government administration.

Location

Excellent location on the Northern side of Byng Street in the Courthouse precinct of the Orange CBD

Description

Prime location opposite courthouse and close to Council Chambers/Orange Civic Centre
Detached two level commercial office building
Excellent existing fitout
11 onsite car parks (2 lock up)
Whole building available for lease or choice of ground or first floor

Parking: 11 on-site parking spaces

Zoning: B4 Mixed Use

Tenancy	Area m ²	Rent (Ex GST)		Net/Gross
		\$pa	\$/m ²	
Whole	590	\$147,500	\$250	Net
Whole	590	\$147,500	\$250	Net

For more information please contact

Nigel Staniforth
0401 279 795

David Hall
0429 656 101

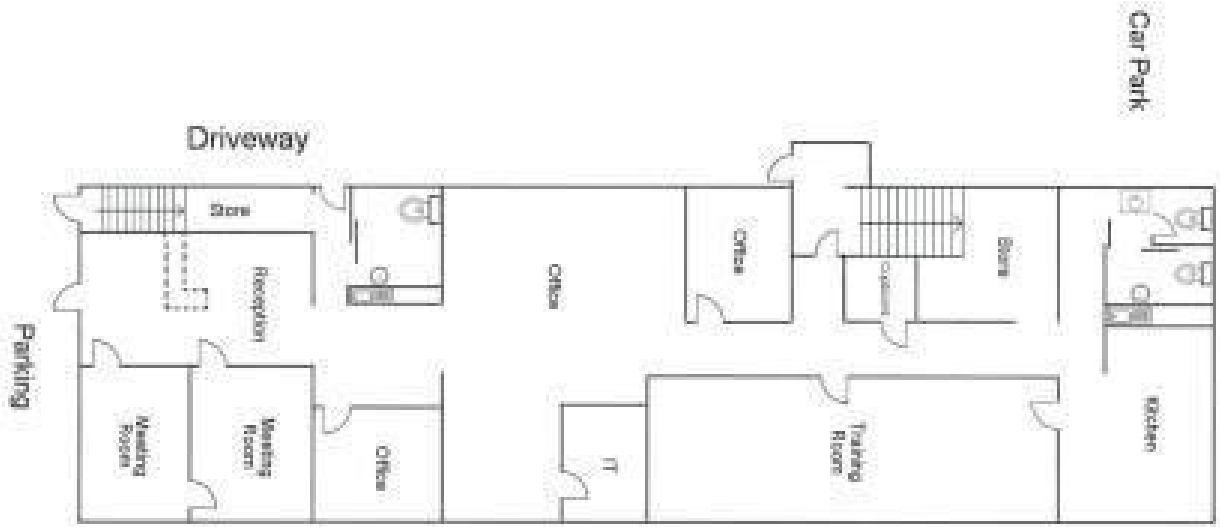


BENCHMARK
COMMERCIAL

194B Lords Place, Orange NSW 2800

Telephone: (02) 63 62 5988
Email: sales@bmpa.com.au
Web: www.bmpa.com.au

GROUND FLOOR



FIRST FLOOR



↔ BYNG STREET ↔