

For Lease

Lot 14 (shed 14) 62-64 Lords Place ORANGE

WELL PRICED SMALL OFFICE

Orange is the largest urban area in Central West New South Wales, population circa 42,500.

The diversified regional economy of Orange is centred on mining, health services and government administration.

Location

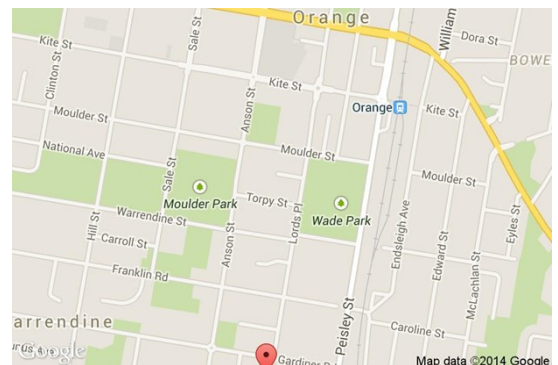
Located in the Lords Place South industrial precinct, 1.3 kilometres south of the Orange CBD.

Description

Office within strata complex
Comprises of reception, 2 offices, kitchenette & amenities
Onsite car parking

Parking: Onsite

Zoning: IN1 General Industrial



Tenancy	Area m ²	Rent (Ex GST)		Net/Gross
		\$pa	\$/week	
Ground Suite 1	75	\$15,600	\$300	Gross

For more information please contact

Nigel Staniforth
0401 279 795

David Hall
0429 656 101

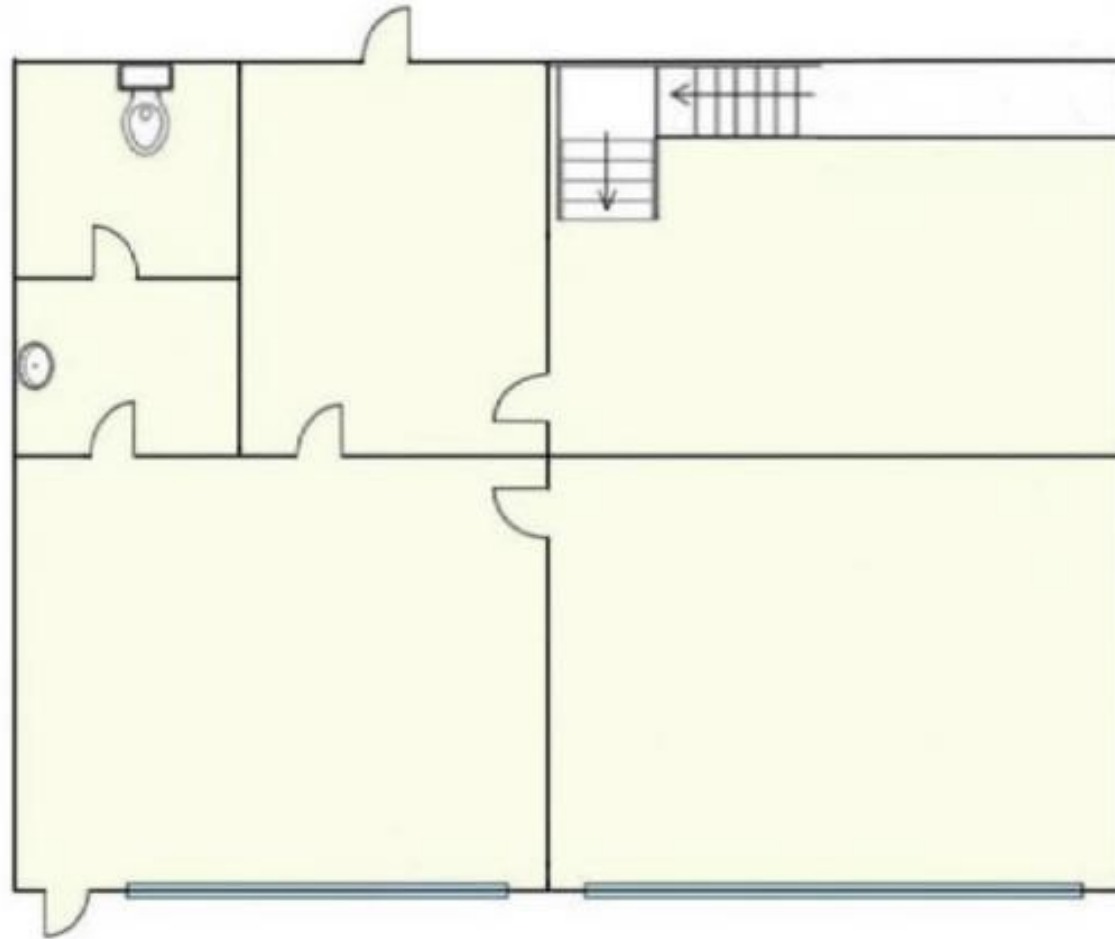


BENCHMARK
COMMERCIAL

194B Lords Place, Orange NSW 2800

Telephone: (02) 63 62 5988
Email: sales@bmpa.com.au
Web: www.bmpa.com.au

ALL AREAS AND FIGURES APPROX. ONLY. All precaution has been taken to establish the accuracy of the information contained in this brochure. It does not, however, constitute any representation by the Vendor or Agent.



SUITE 1