

# For Lease

## Level One 225 Anson Street ORANGE

### CBD OFFICE OR RETAIL PREMISES

Orange is the largest urban area in Central West New South Wales, population circa 40,000.

The diversified regional economy of Orange is centred on mining, health services and government administration.

### Location

Located in the Orange CBD on the western side of Anson Street between Summer Street and Byng Street

### Description

Two-level detached brick building offered for lease as a whole or ground/first floor separately

Suite office or retail use (STCA)

Ground Floor 302sqm First Floor 144sqm

Frontage 9.16m

Separate male/female amenities

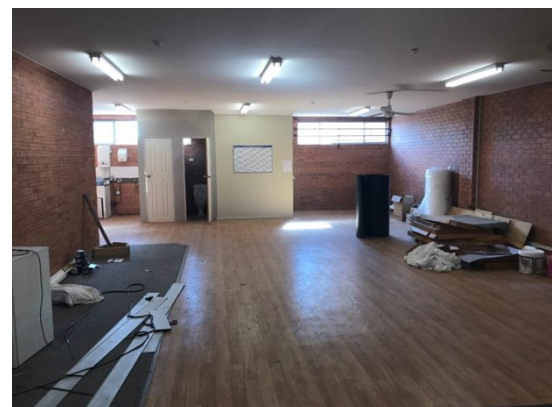
On-site parking available by negotiation

Lessor will provide clear warm shell tenancy or fitout to your requirements (by negotiation)

Parking: on-site by negotiation

Zoning: B3 Commercial Core

Price: Contact agent for details



### For more information please contact

David Hall  
0429 656 101

Nigel Staniforth  
0401 279 795



**BENCHMARK**  
COMMERCIAL

29 Sale Street, Orange NSW 2800

Telephone: (02) 63 62 5988  
Email: sales@bmpa.com.au  
Web: www.bmpa.com.au

FIRST FLOOR

