

For Lease

345-347 Summer Street ORANGE

AFFORDABLE HIGHWAY FRONTAGE OFFICE

Orange is the largest urban area in Central West New South Wales, population circa 40,000.

The diversified regional economy of Orange is centred on mining, health services and government administration.

Location

Situated on the Northern side of Summer street approximately 450 metres east of Orange Post Office

Description

Excellent exposure on Mitchell Highway
Clean and well presented office accommodation
Reverse cycle air-conditioning
Security alarm system
Rear access and parking for 2 cars (undercover)
Some furniture available if required

Parking: 2 under cover parking spaces

Zoning: B3 Commercial Core



Tenancy	Area m ²	Rent (Ex GST)		Net/Gross
		\$pa	\$/week	
No. 347	100	\$23,400	\$450	Gross

For more information please contact

David Hall
0429 656 101

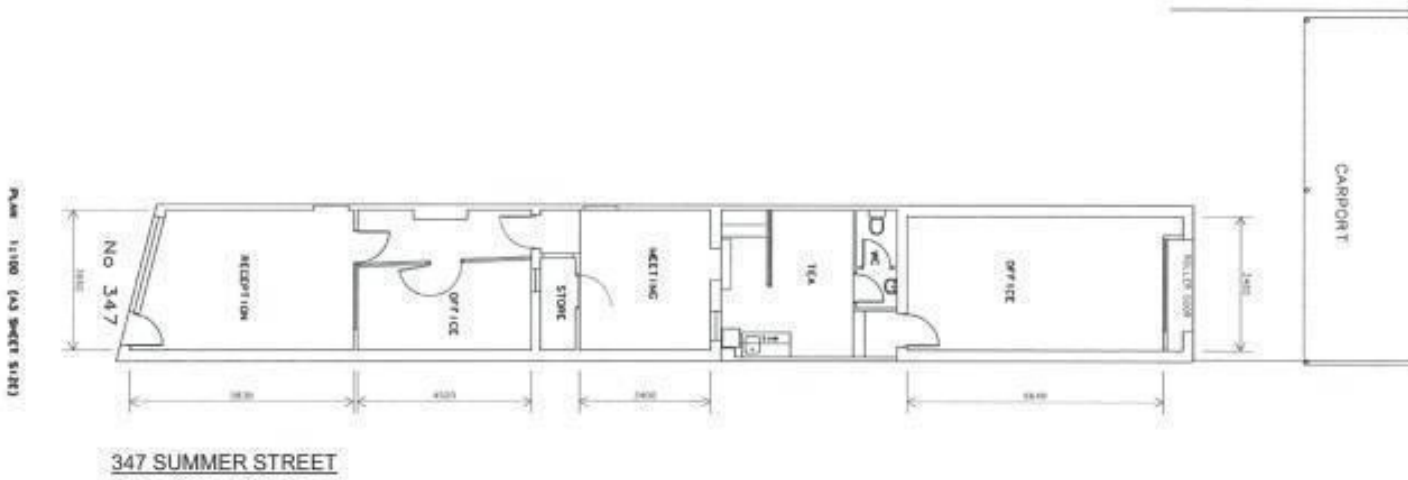
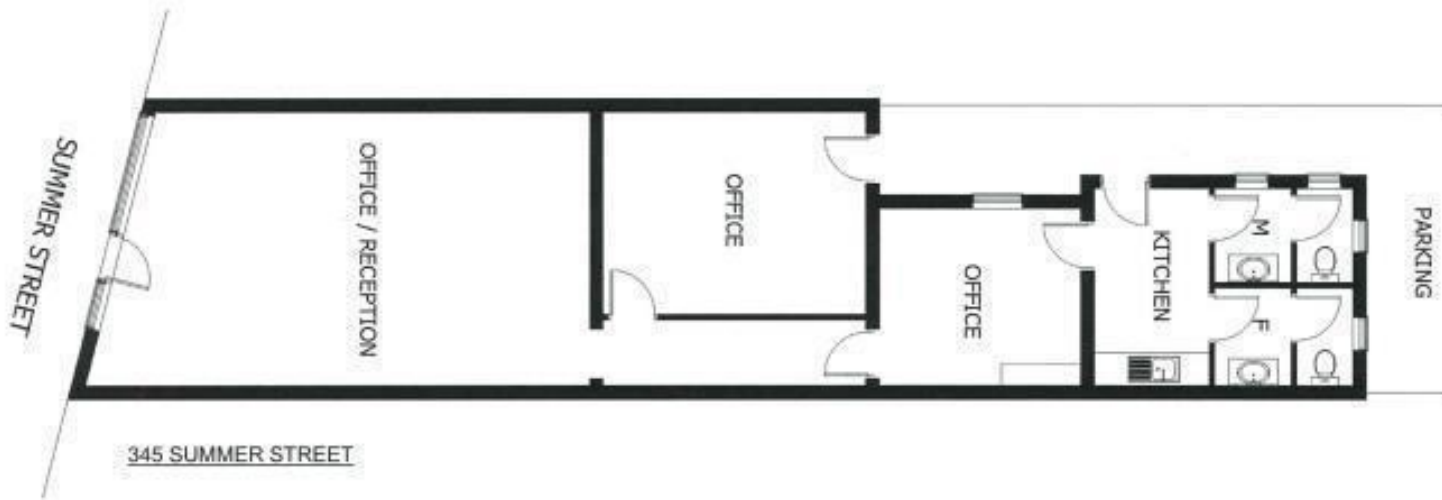
Nigel Staniforth
0401 279 795



BENCHMARK
COMMERCIAL

29 Sale Street, Orange NSW 2800

Telephone: (02) 63 62 5988
Email: sales@bmpa.com.au
Web: www.bmpa.com.au



Plan 1:100 (A3 SHEET S1/R3)