

For Lease

Orange Arcade 142-148 Summer Street ORANGE

WELL PRICED RETAIL/OFFICE SPACE

Orange is the largest urban area in Central West New South Wales, population circa 40,000.

The diversified regional economy of Orange is centred on mining, health services and government administration.

Location

Situated in the heart of Orange CBD on the sunny side of the retail strip.

Description

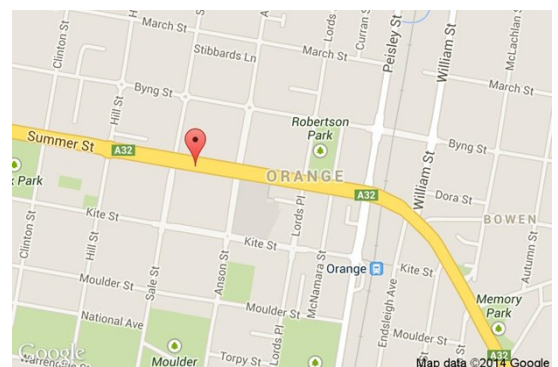
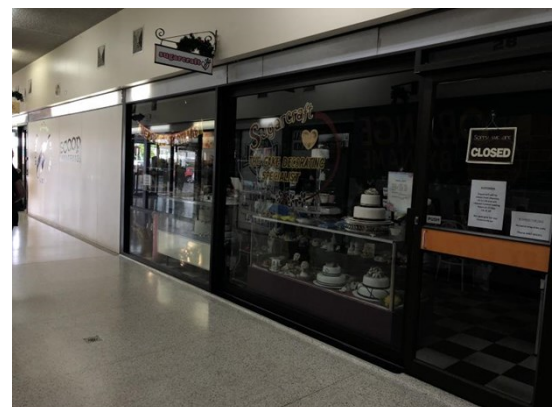
Centrally located on the main retail strip
Retail shopping arcade with 24 shops/suites
Vibrant mix of boutique/speciality shops and larger retailers such as Harris Farm Markets
Adjacent to national retailers and Woolworths car park

Amenities: Shared
Ceiling: Mixed Construction
Lighting: Mixed Configuration
Air Conditioning: Yes

Parking: Public car park adjoins

Zoning: B3 Commercial Core

Tenancy	Area m ²	Rent (Ex GST)			Net/Gross
		\$pa	\$/m ²	\$/week	
Ground Shop 28	52	\$21,840	\$420	\$420	Gross



For more information please contact

Nigel Staniforth
0401 279 795

David Hall
0429 656 101

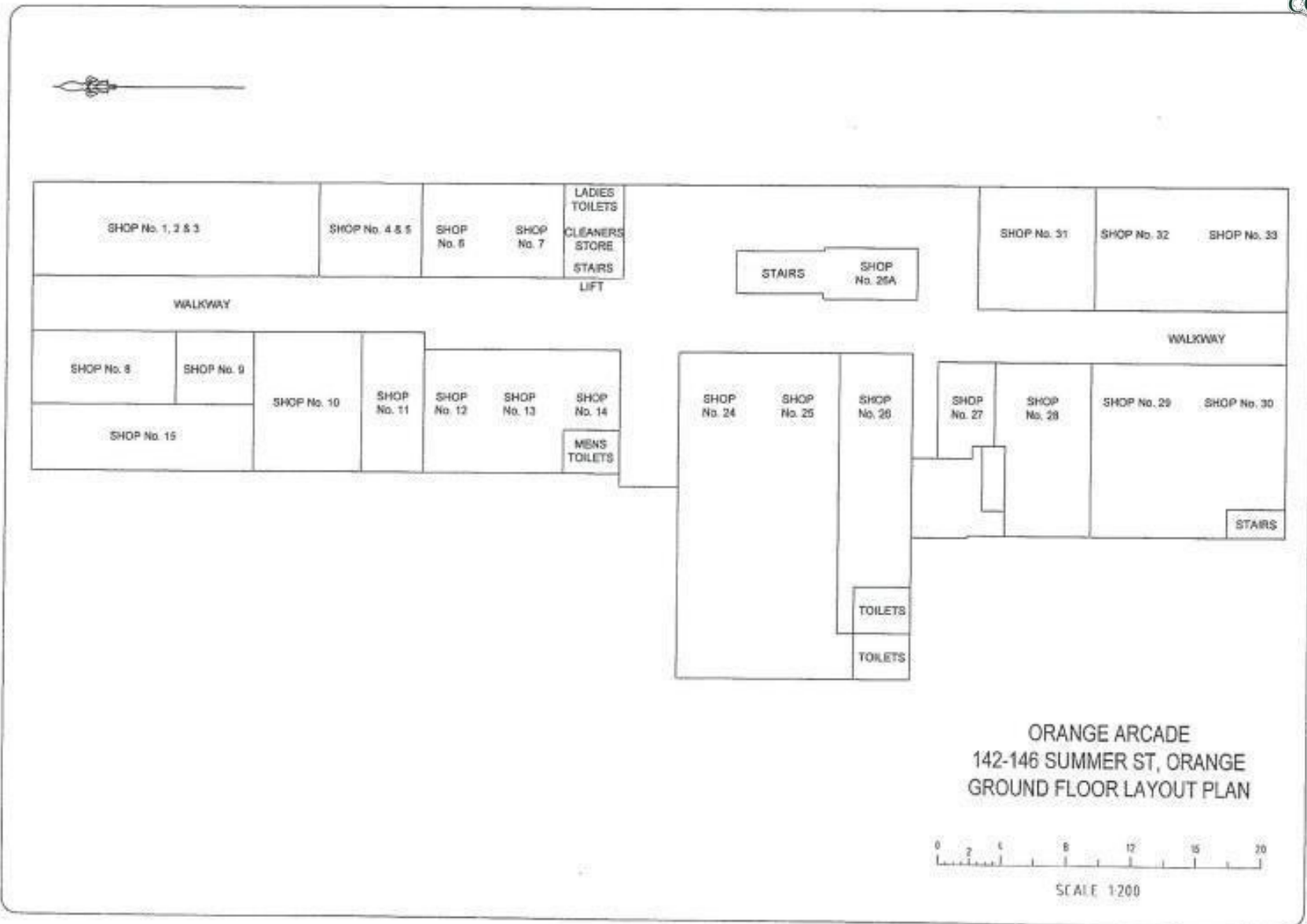


BENCHMARK
COMMERCIAL

194B Lords Place, Orange NSW 2800

Telephone: (02) 63 62 5988
Email: sales@bmpa.com.au
Web: www.bmpa.com.au

SUMMER STREET



Woolworths Carpark

ORANGE ARCADE
142-146 SUMMER ST, ORANGE
GROUND FLOOR LAYOUT PLAN



SCALE 1:200